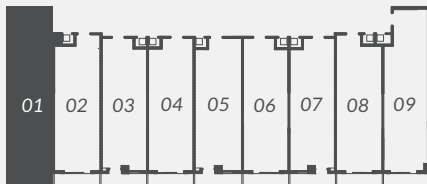




HOTEL RESIDENCE COLLECTION

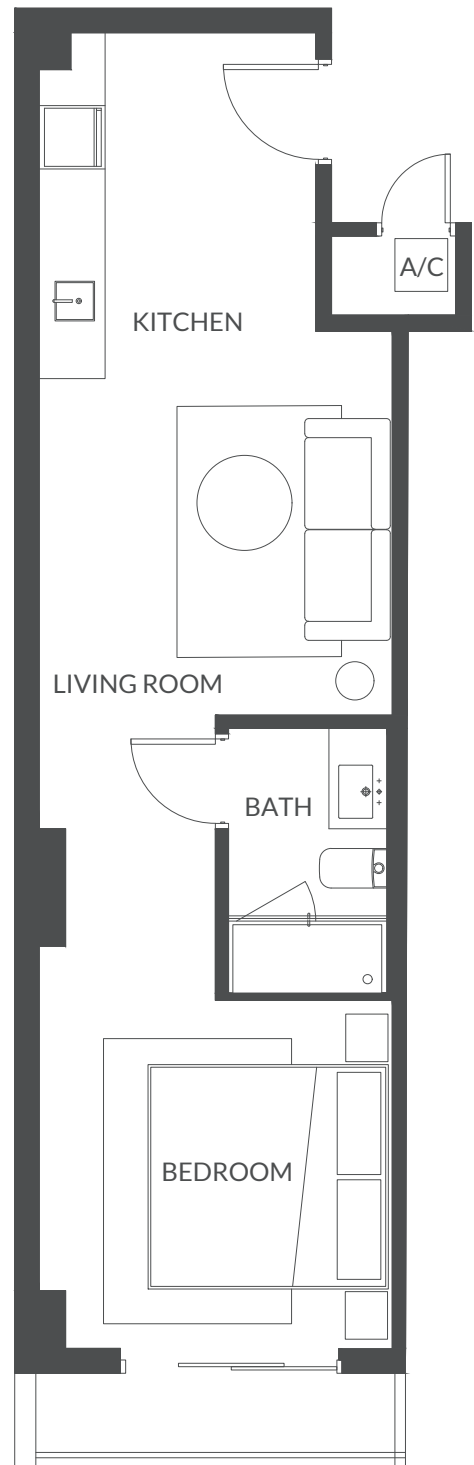
Line 01
Levels 2 - 3



INTERIOR
449 SF | 42 M2

EXTERIOR
34 SF | 3 M2

TOTAL AREA
483 SF | 45 M2



ARQUITECTONICAINTERIORS

Gensler

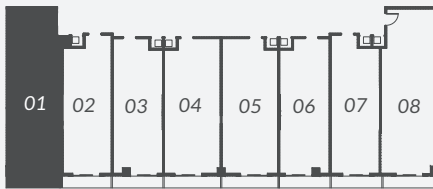


THE ABOVE DRAWINGS ARE CONCEPTUAL ONLY AND ARE SUBJECT TO CHANGE WITHOUT NOTICE AT THE DISCRETION OF THE DEVELOPER. THE DEVELOPER RESERVES THE RIGHT TO MAKE ADDITIONS, DELETIONS AND MODIFICATIONS TO THE DRAWINGS AS THE DEVELOPER MAY DEEM APPROPRIATE OR DESIRABLE. DIMENSIONS AND SQUARE FOOTAGES ARE APPROXIMATE AND MAY VARY WITH ACTUAL CONSTRUCTION.



HOTEL RESIDENCE COLLECTION

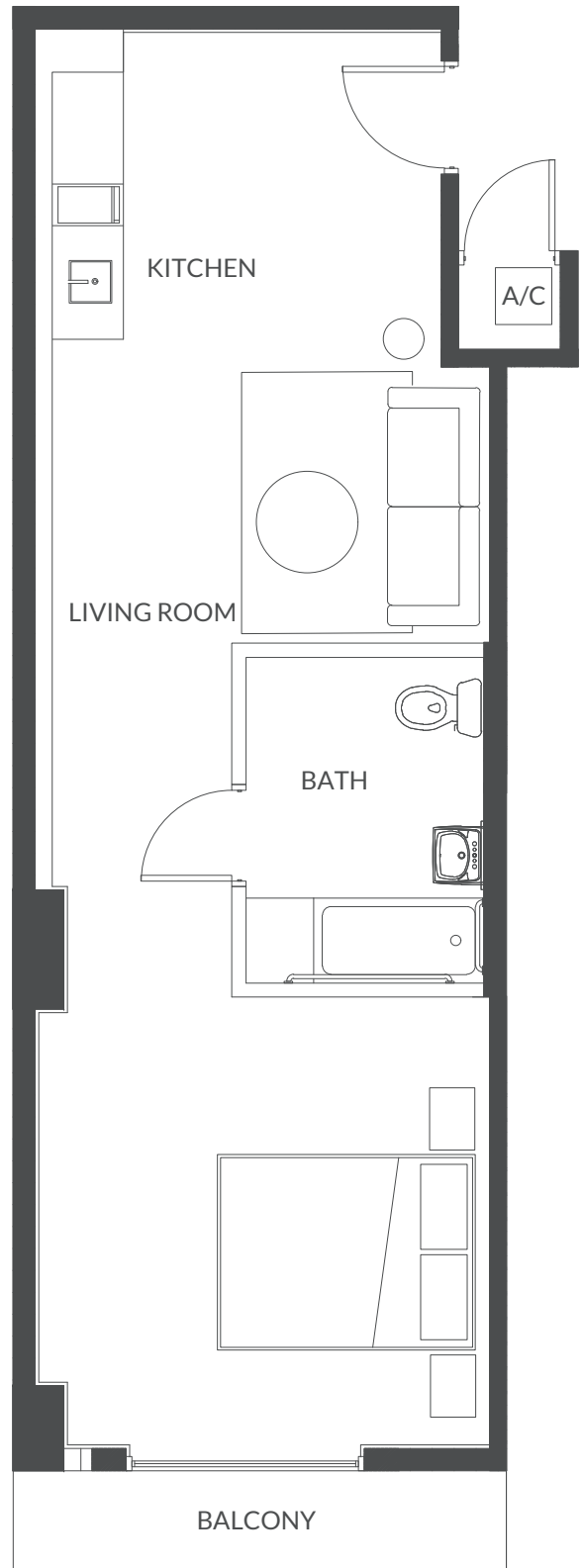
Line 01
Levels 4 - 7



INTERIOR
540 SF | 50 M2

EXTERIOR
38 SF | 4 M2

TOTAL AREA
578 SF | 54 M2



ARQUITECTONICAINTERIORS

Gensler

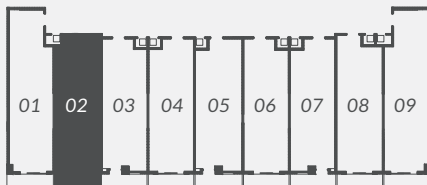


THE ABOVE DRAWINGS ARE CONCEPTUAL ONLY AND ARE SUBJECT TO CHANGE WITHOUT NOTICE AT THE DISCRETION OF THE DEVELOPER. THE DEVELOPER RESERVES THE RIGHT TO MAKE ADDITIONS, DELETIONS AND MODIFICATIONS TO THE DRAWINGS AS THE DEVELOPER MAY DEEM APPROPRIATE OR DESIRABLE. DIMENSIONS AND SQUARE FOOTAGES ARE APPROXIMATE AND MAY VARY WITH ACTUAL CONSTRUCTION.



HOTEL RESIDENCE COLLECTION

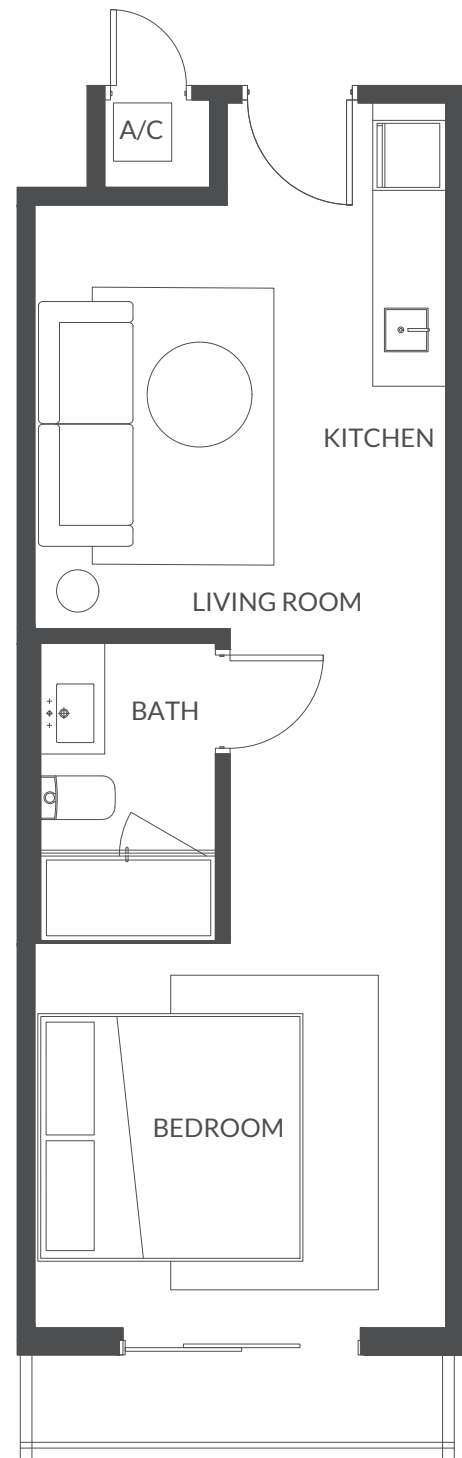
Line 02
Levels 2 - 3



INTERIOR
406 SF | 38 M2

EXTERIOR
35 SF | 3 M2

TOTAL AREA
441 SF | 41 M2



ARQUITECTONICAINTERIORS

Gensler

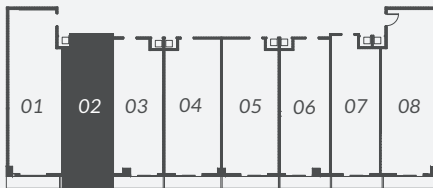


THE ABOVE DRAWINGS ARE CONCEPTUAL ONLY AND ARE SUBJECT TO CHANGE WITHOUT NOTICE AT THE DISCRETION OF THE DEVELOPER. THE DEVELOPER RESERVES THE RIGHT TO MAKE ADDITIONS, DELETIONS AND MODIFICATIONS TO THE DRAWINGS AS THE DEVELOPER MAY DEEM APPROPRIATE OR DESIRABLE. DIMENSIONS AND SQUARE FOOTAGES ARE APPROXIMATE AND MAY VARY WITH ACTUAL CONSTRUCTION.



HOTEL RESIDENCE COLLECTION

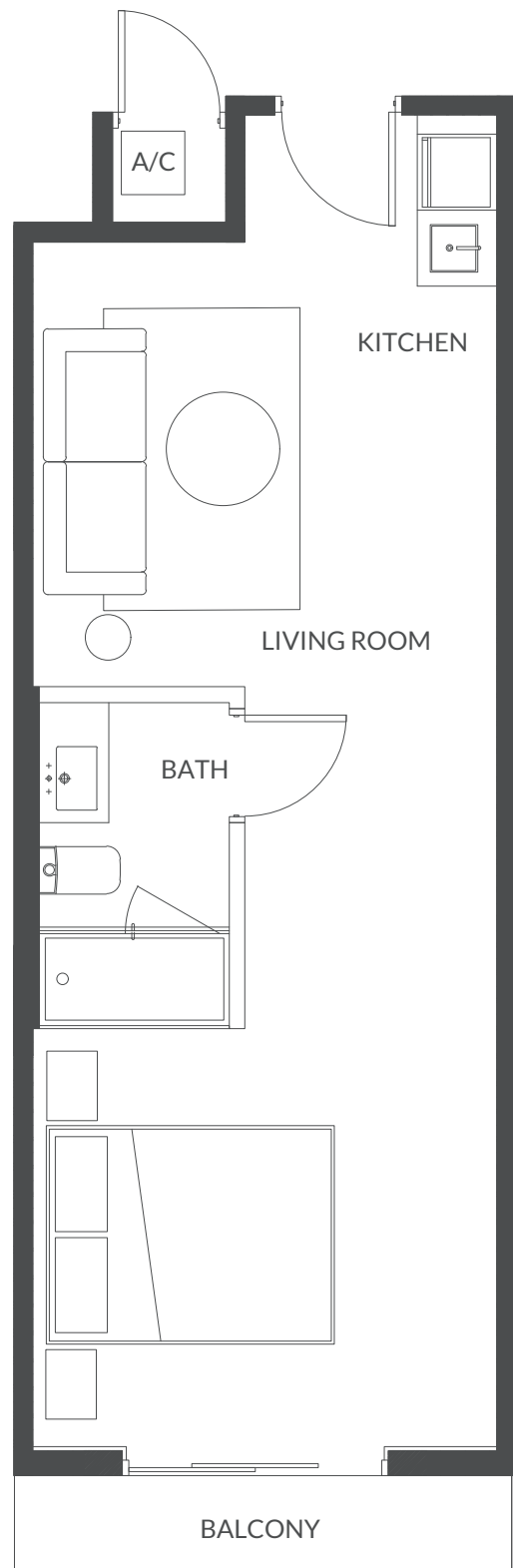
Line 02
Levels 4 - 7



INTERIOR
419 SF | 38 M²

EXTERIOR
38 SF | 4 M²

TOTAL AREA
457 SF | 42 M²



ARQUITECTONICAINTERIORS

Gensler

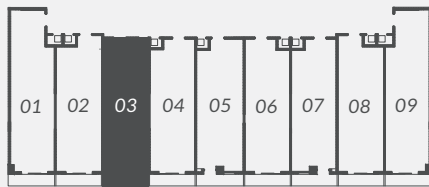


THE ABOVE DRAWINGS ARE CONCEPTUAL ONLY AND ARE SUBJECT TO CHANGE WITHOUT NOTICE AT THE DISCRETION OF THE DEVELOPER. THE DEVELOPER RESERVES THE RIGHT TO MAKE ADDITIONS, DELETIONS AND MODIFICATIONS TO THE DRAWINGS AS THE DEVELOPER MAY DEEM APPROPRIATE OR DESIRABLE. DIMENSIONS AND SQUARE FOOTAGES ARE APPROXIMATE AND MAY VARY WITH ACTUAL CONSTRUCTION.



HOTEL RESIDENCE COLLECTION

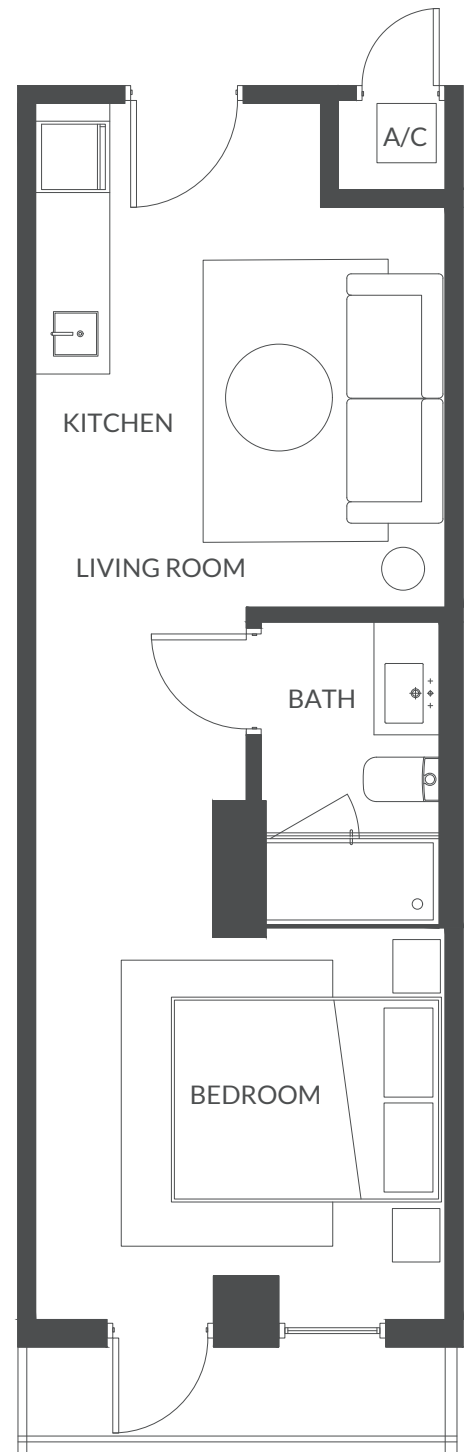
Line 03
Levels 2 - 3



INTERIOR
390 SF | 36 M2

EXTERIOR
35 SF | 3 M2

TOTAL AREA
425 SF | 39 M2



ARQUITECTONICAINTERIORS

Gensler

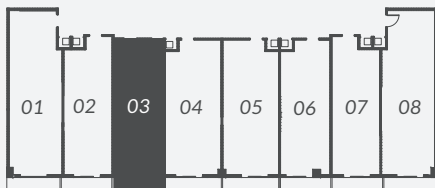


THE ABOVE DRAWINGS ARE CONCEPTUAL ONLY AND ARE SUBJECT TO CHANGE WITHOUT NOTICE AT THE DISCRETION OF THE DEVELOPER. THE DEVELOPER RESERVES THE RIGHT TO MAKE ADDITIONS, DELETIONS AND MODIFICATIONS TO THE DRAWINGS AS THE DEVELOPER MAY DEEM APPROPRIATE OR DESIRABLE. DIMENSIONS AND SQUARE FOOTAGES ARE APPROXIMATE AND MAY VARY WITH ACTUAL CONSTRUCTION.



HOTEL RESIDENCE COLLECTION

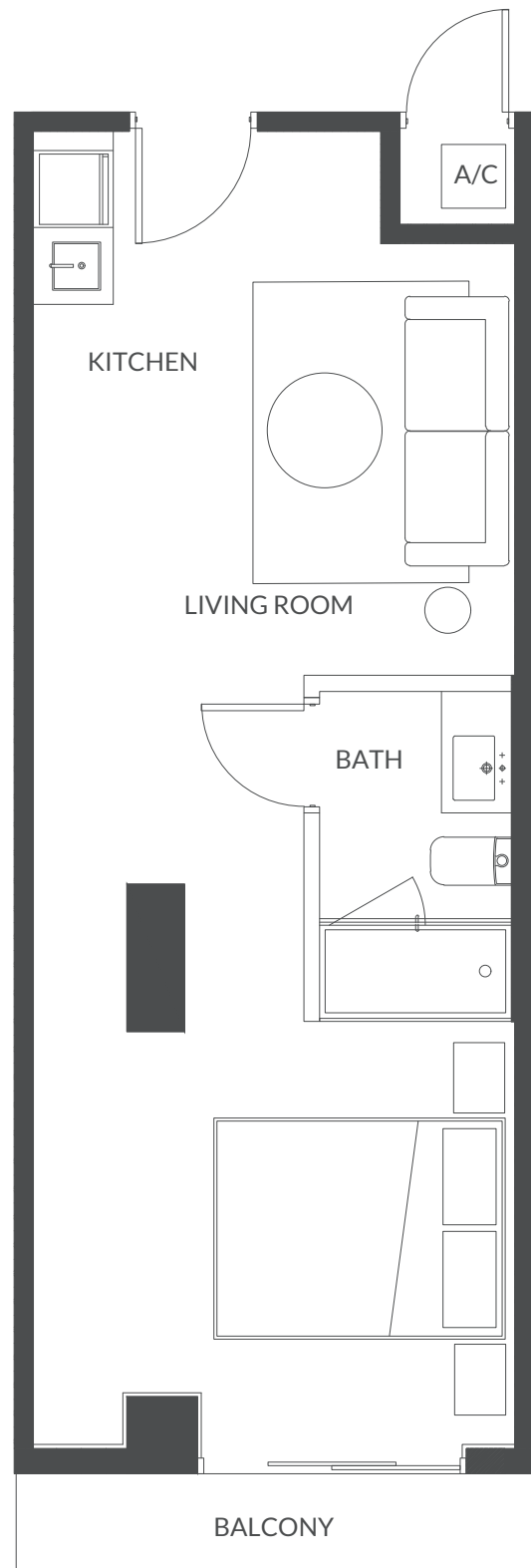
Line 03
Levels 4 - 7



INTERIOR
427 SF | 39 M2

EXTERIOR
38 SF | 4 M2

TOTAL AREA
430 SF | 43 M2



ARQUITECTONICAINTERIORS

Gensler

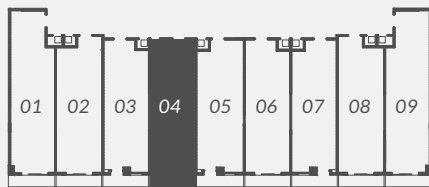


THE ABOVE DRAWINGS ARE CONCEPTUAL ONLY AND ARE SUBJECT TO CHANGE WITHOUT NOTICE AT THE DISCRETION OF THE DEVELOPER. THE DEVELOPER RESERVES THE RIGHT TO MAKE ADDITIONS, DELETIONS AND MODIFICATIONS TO THE DRAWINGS AS THE DEVELOPER MAY DEEM APPROPRIATE OR DESIRABLE. DIMENSIONS AND SQUARE FOOTAGES ARE APPROXIMATE AND MAY VARY WITH ACTUAL CONSTRUCTION.



HOTEL RESIDENCE COLLECTION

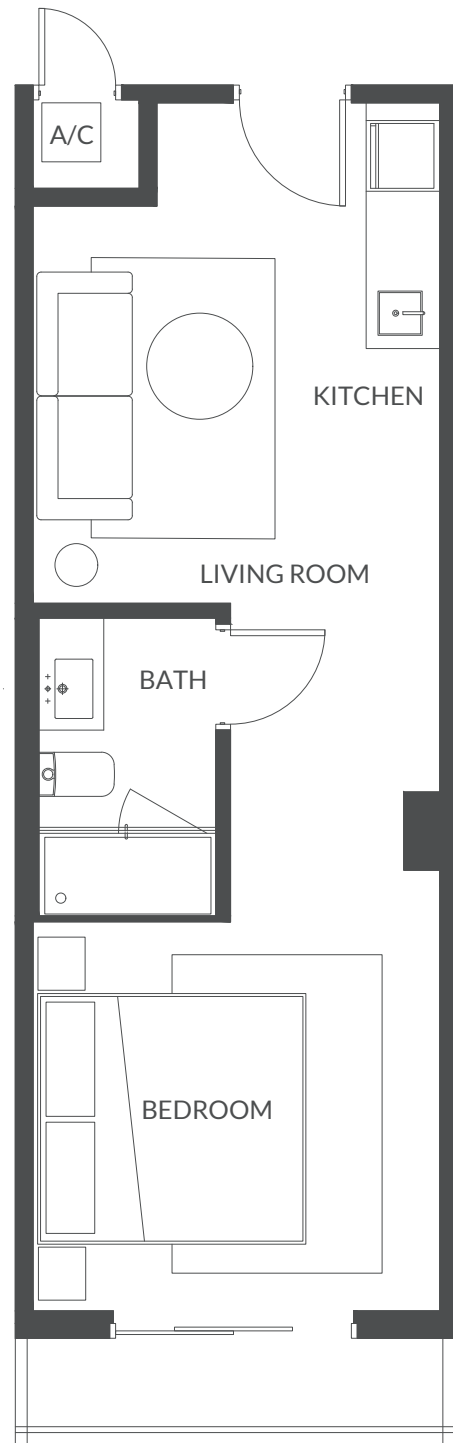
Line 04
Levels 2 - 3



INTERIOR
393 SF | 37 M2

EXTERIOR
35 SF | 3 M2

TOTAL AREA
428 SF | 40 M2



ARQUITECTONICAINTERIORS

Gensler

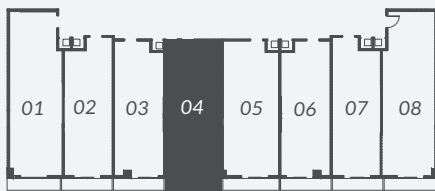


THE ABOVE DRAWINGS ARE CONCEPTUAL ONLY AND ARE SUBJECT TO CHANGE WITHOUT NOTICE AT THE DISCRETION OF THE DEVELOPER. THE DEVELOPER RESERVES THE RIGHT TO MAKE ADDITIONS, DELETIONS AND MODIFICATIONS TO THE DRAWINGS AS THE DEVELOPER MAY DEEM APPROPRIATE OR DESIRABLE. DIMENSIONS AND SQUARE FOOTAGES ARE APPROXIMATE AND MAY VARY WITH ACTUAL CONSTRUCTION.



HOTEL RESIDENCE COLLECTION

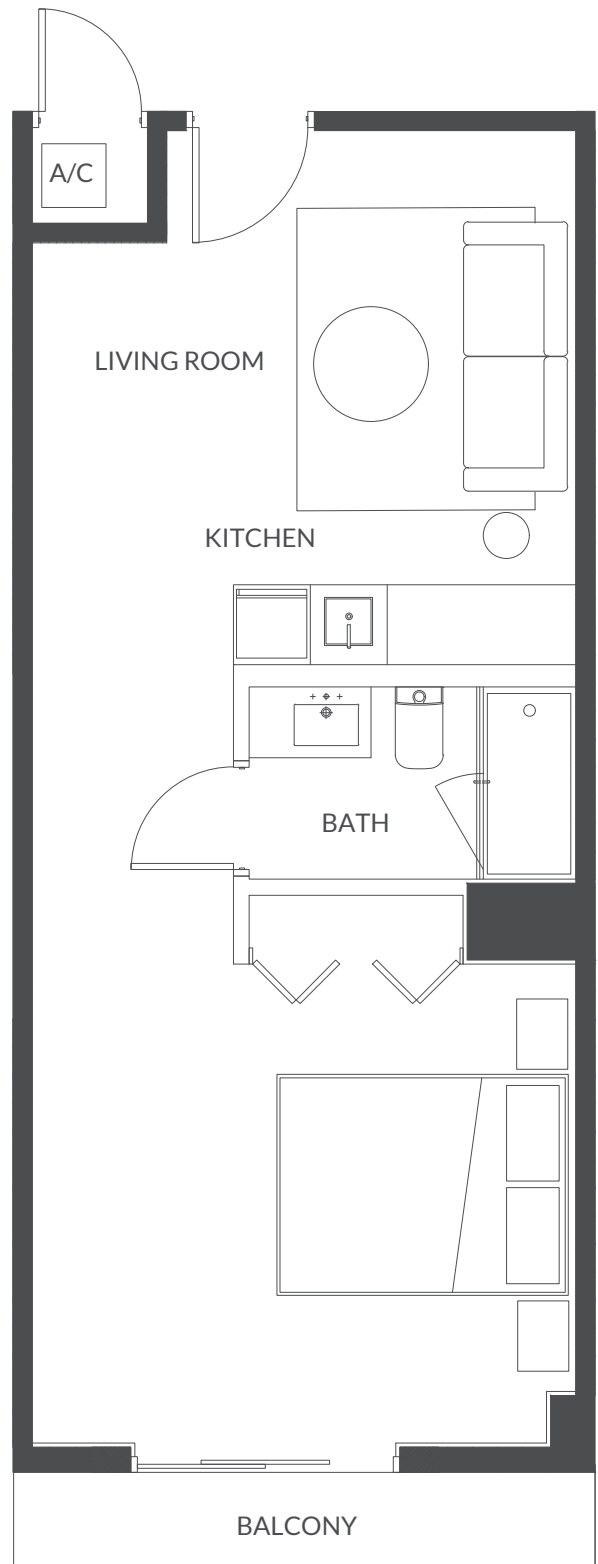
Line 04
Levels 4 - 7



INTERIOR
484 SF | 45 M2

EXTERIOR
42 SF | 4 M2

TOTAL AREA
526 SF | 49 M2



ARQUITECTONICAINTERIORS

Gensler

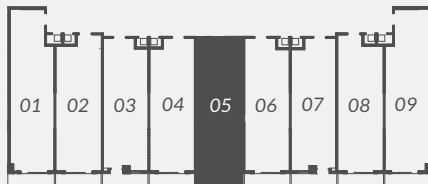


THE ABOVE DRAWINGS ARE CONCEPTUAL ONLY AND ARE SUBJECT TO CHANGE WITHOUT NOTICE AT THE DISCRETION OF THE DEVELOPER. THE DEVELOPER RESERVES THE RIGHT TO MAKE ADDITIONS, DELETIONS AND MODIFICATIONS TO THE DRAWINGS AS THE DEVELOPER MAY DEEM APPROPRIATE OR DESIRABLE. DIMENSIONS AND SQUARE FOOTAGES ARE APPROXIMATE AND MAY VARY WITH ACTUAL CONSTRUCTION.



HOTEL RESIDENCE COLLECTION

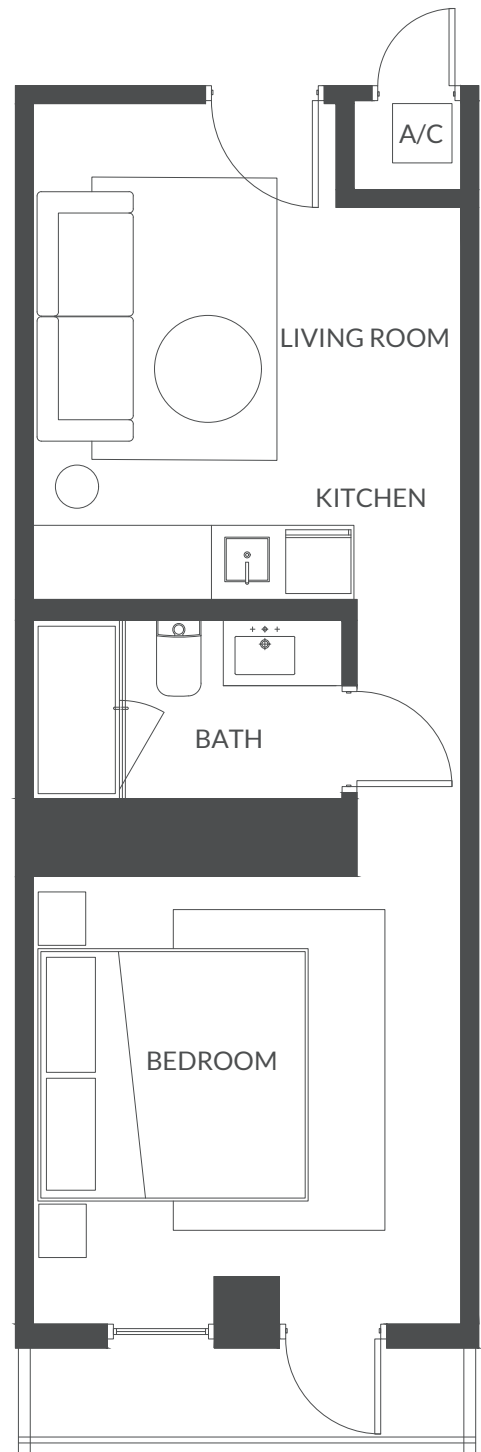
*Line 05
Levels 2 - 3*



INTERIOR
407 SF | 38 M2

EXTERIOR
35 SF | 3 M2

TOTAL AREA
442 SF | 41 M2



ARQUITECTONICAINTERIORS

Gensler

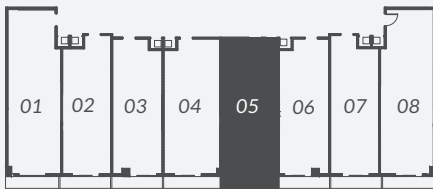


THE ABOVE DRAWINGS ARE CONCEPTUAL ONLY AND ARE SUBJECT TO CHANGE WITHOUT NOTICE AT THE DISCRETION OF THE DEVELOPER. THE DEVELOPER RESERVES THE RIGHT TO MAKE ADDITIONS, DELETIONS AND MODIFICATIONS TO THE DRAWINGS AS THE DEVELOPER MAY DEEM APPROPRIATE OR DESIRABLE. DIMENSIONS AND SQUARE FOOTAGES ARE APPROXIMATE AND MAY VARY WITH ACTUAL CONSTRUCTION.



HOTEL RESIDENCE COLLECTION

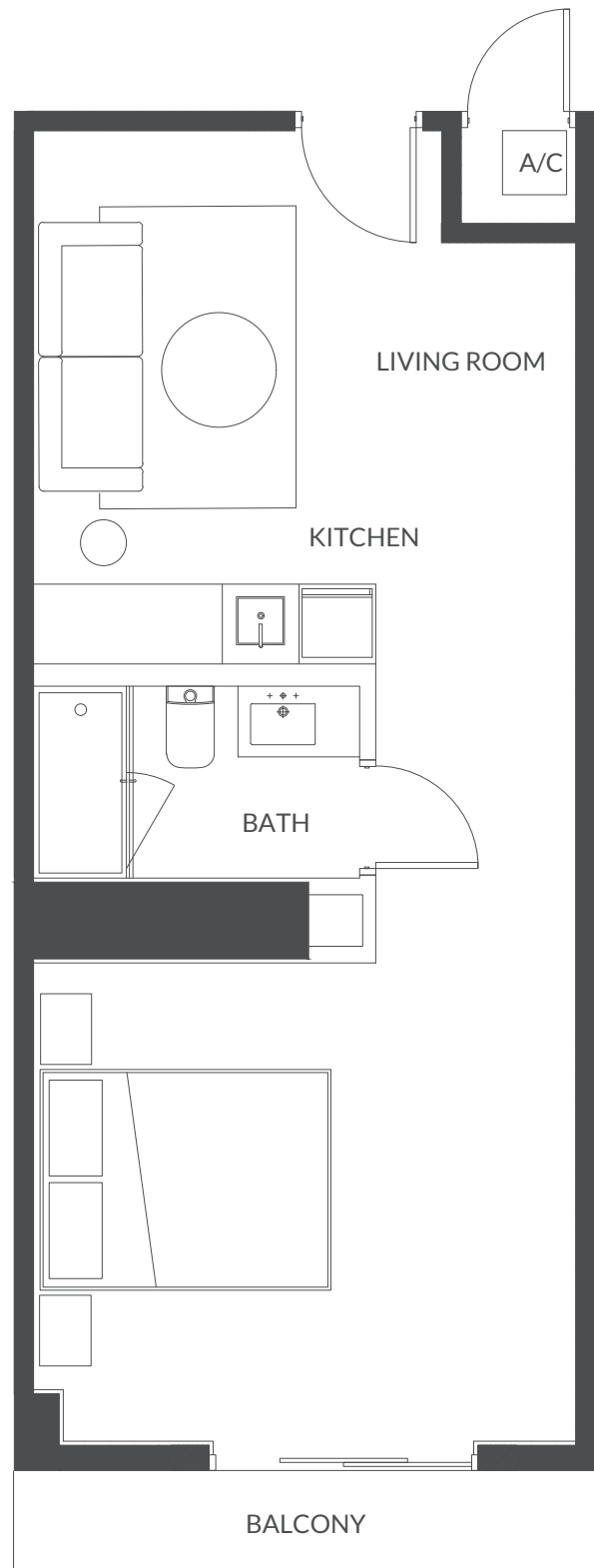
*Line 05
Levels 4 - 7*



INTERIOR
484 SF | 45 M2

EXTERIOR
42 SF | 4 M2

TOTAL AREA
526 SF | 49 M2



ARQUITECTONICAINTERIORS

Gensler

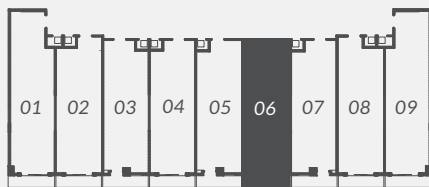


THE ABOVE DRAWINGS ARE CONCEPTUAL ONLY AND ARE SUBJECT TO CHANGE WITHOUT NOTICE AT THE DISCRETION OF THE DEVELOPER. THE DEVELOPER RESERVES THE RIGHT TO MAKE ADDITIONS, DELETIONS AND MODIFICATIONS TO THE DRAWINGS AS THE DEVELOPER MAY DEEM APPROPRIATE OR DESIRABLE. DIMENSIONS AND SQUARE FOOTAGES ARE APPROXIMATE AND MAY VARY WITH ACTUAL CONSTRUCTION.



HOTEL RESIDENCE COLLECTION

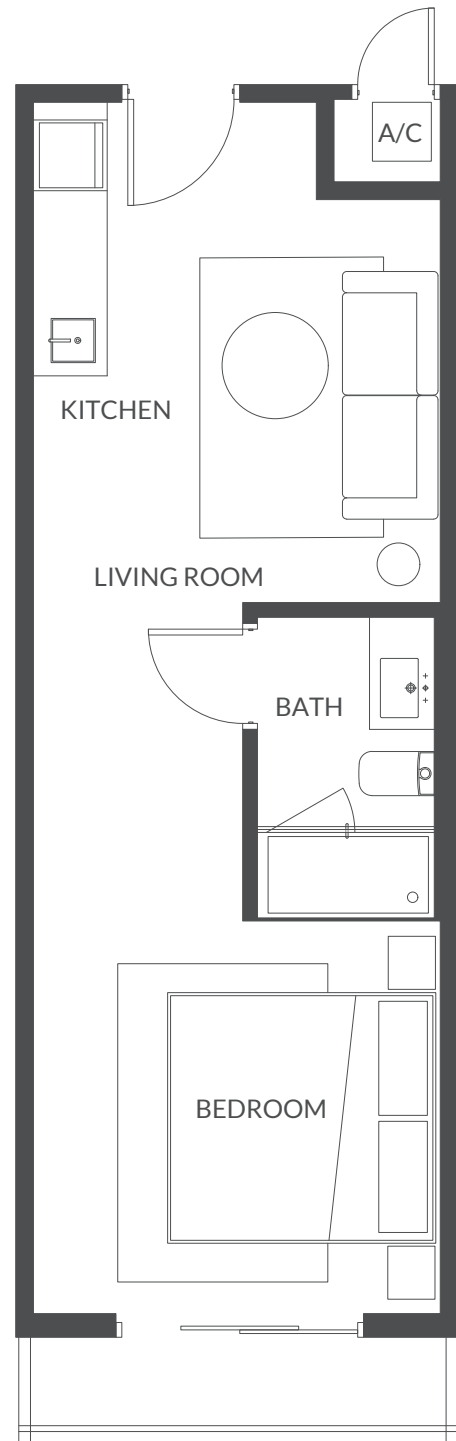
Line 06
Levels 2 - 3



INTERIOR
393 SF | 37 M2

EXTERIOR
35 SF | 3 M2

TOTAL AREA
428 SF | 40 M2



ARQUITECTONICAINTERIORS

Gensler

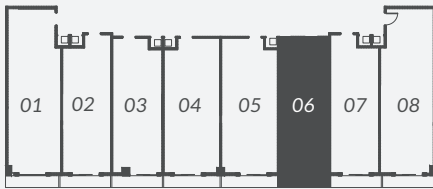


THE ABOVE DRAWINGS ARE CONCEPTUAL ONLY AND ARE SUBJECT TO CHANGE WITHOUT NOTICE AT THE DISCRETION OF THE DEVELOPER. THE DEVELOPER RESERVES THE RIGHT TO MAKE ADDITIONS, DELETIONS AND MODIFICATIONS TO THE DRAWINGS AS THE DEVELOPER MAY DEEM APPROPRIATE OR DESIRABLE. DIMENSIONS AND SQUARE FOOTAGES ARE APPROXIMATE AND MAY VARY WITH ACTUAL CONSTRUCTION.



HOTEL RESIDENCE COLLECTION

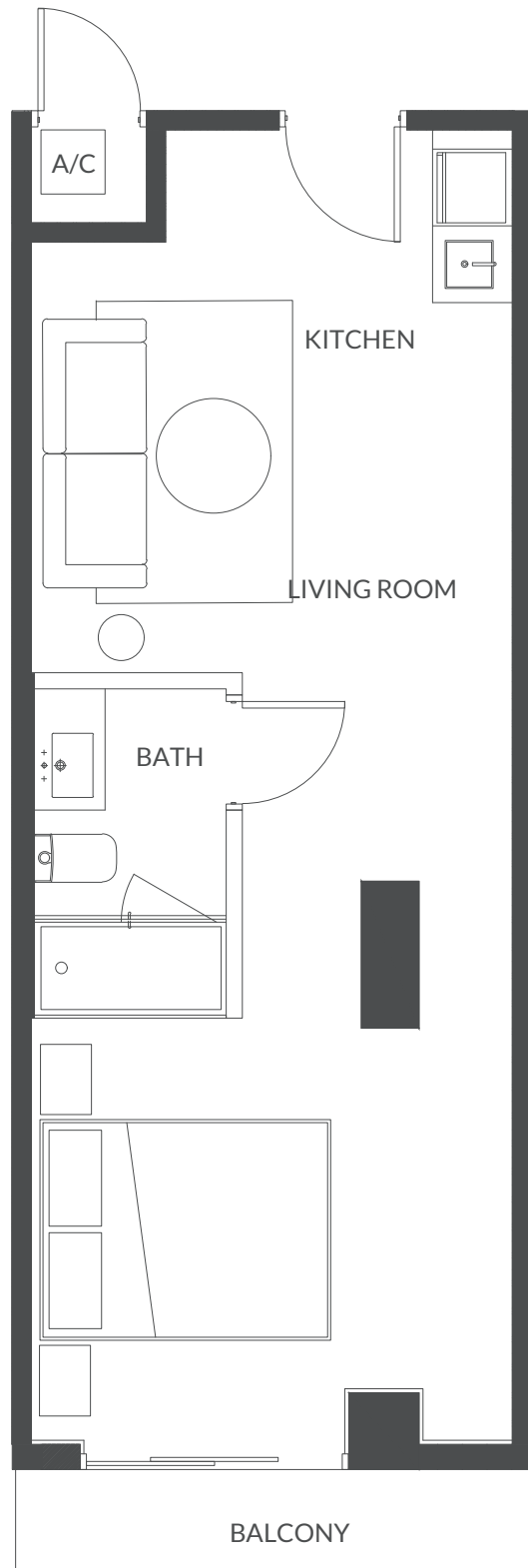
Line 06
Levels 4 - 7



INTERIOR
427 SF | 39 M2

EXTERIOR
38 SF | 4 M2

TOTAL AREA
430 SF | 43 M2



ARQUITECTONICAINTERIORS

Gensler

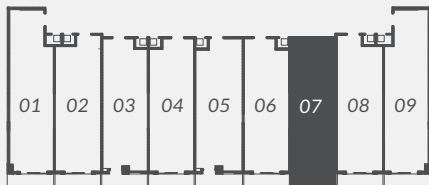


THE ABOVE DRAWINGS ARE CONCEPTUAL ONLY AND ARE SUBJECT TO CHANGE WITHOUT NOTICE AT THE DISCRETION OF THE DEVELOPER. THE DEVELOPER RESERVES THE RIGHT TO MAKE ADDITIONS, DELETIONS AND MODIFICATIONS TO THE DRAWINGS AS THE DEVELOPER MAY DEEM APPROPRIATE OR DESIRABLE. DIMENSIONS AND SQUARE FOOTAGES ARE APPROXIMATE AND MAY VARY WITH ACTUAL CONSTRUCTION.



HOTEL RESIDENCE COLLECTION

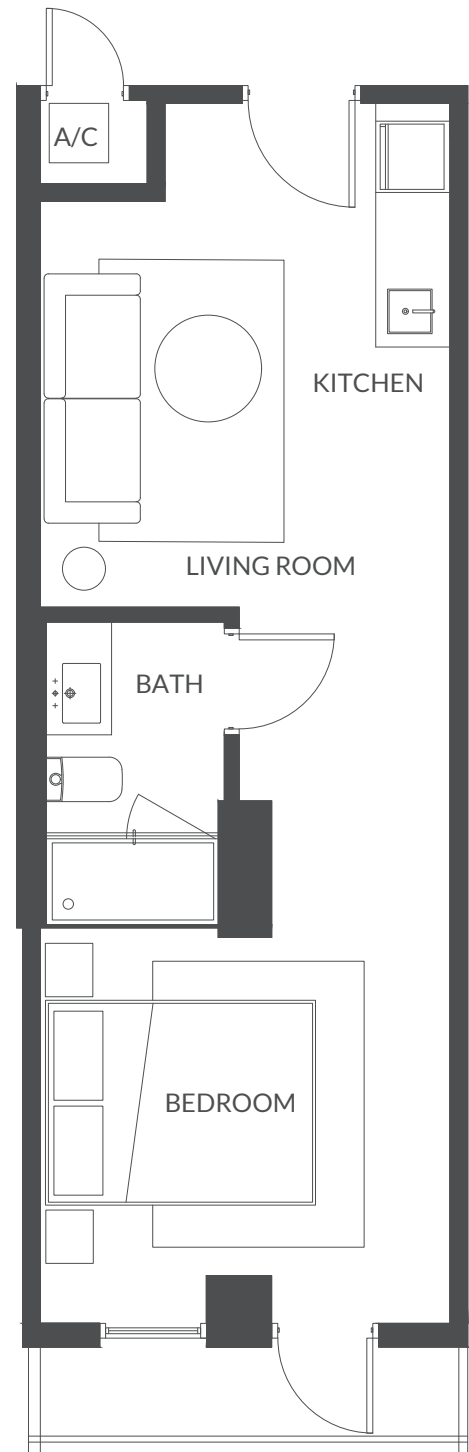
Line 07
Levels 2 - 3



INTERIOR
390 SF | 36 M2

EXTERIOR
35 SF | 3 M2

TOTAL AREA
425 SF | 39 M2



ARQUITECTONICAINTERIORS

Gensler

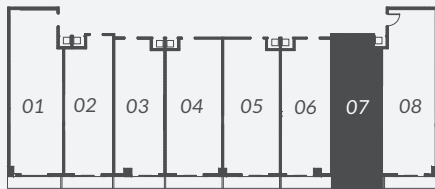
HABITATGROUP

THE ABOVE DRAWINGS ARE CONCEPTUAL ONLY AND ARE SUBJECT TO CHANGE WITHOUT NOTICE AT THE DISCRETION OF THE DEVELOPER. THE DEVELOPER RESERVES THE RIGHT TO MAKE ADDITIONS, DELETIONS AND MODIFICATIONS TO THE DRAWINGS AS THE DEVELOPER MAY DEEM APPROPRIATE OR DESIRABLE. DIMENSIONS AND SQUARE FOOTAGES ARE APPROXIMATE AND MAY VARY WITH ACTUAL CONSTRUCTION.



HOTEL RESIDENCE COLLECTION

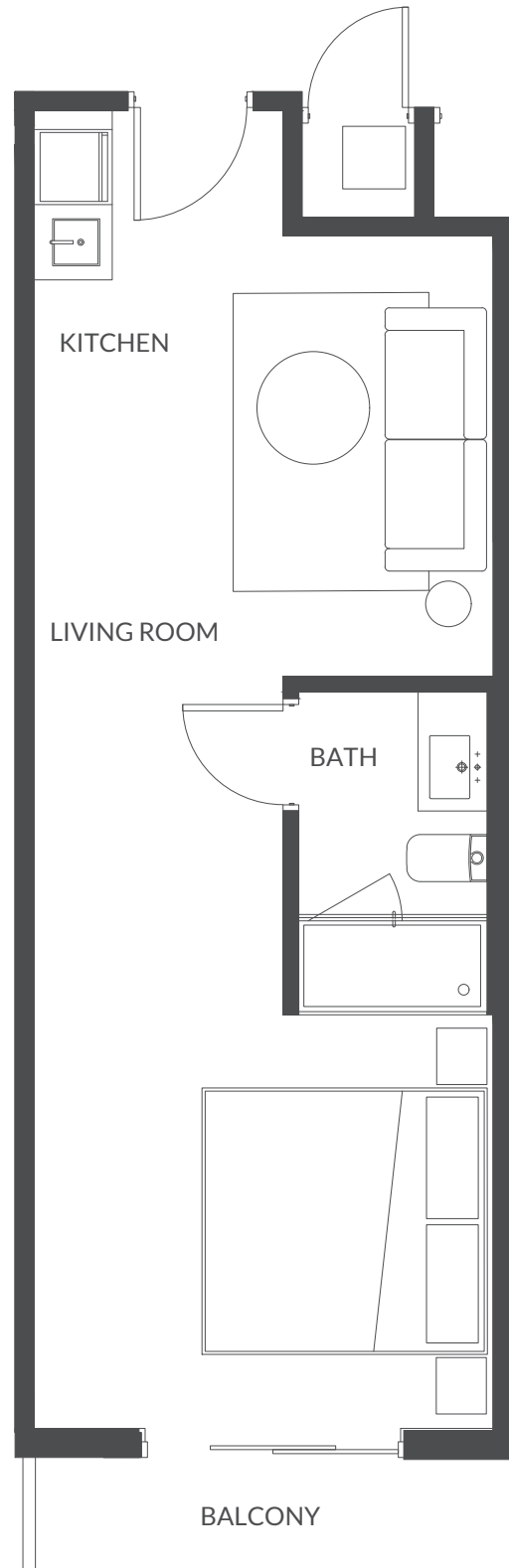
Line 07
Levels 4 - 7



INTERIOR
419 SF | 38 M2

EXTERIOR
38 SF | 4 M2

TOTAL AREA
457 SF | 42 M2



ARQUITECTONICAINTERIORS

Gensler

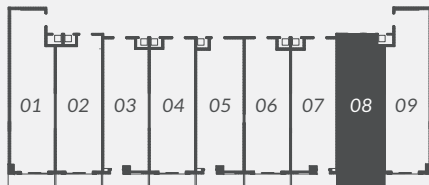


THE ABOVE DRAWINGS ARE CONCEPTUAL ONLY AND ARE SUBJECT TO CHANGE WITHOUT NOTICE AT THE DISCRETION OF THE DEVELOPER. THE DEVELOPER RESERVES THE RIGHT TO MAKE ADDITIONS, DELETIONS AND MODIFICATIONS TO THE DRAWINGS AS THE DEVELOPER MAY DEEM APPROPRIATE OR DESIRABLE. DIMENSIONS AND SQUARE FOOTAGES ARE APPROXIMATE AND MAY VARY WITH ACTUAL CONSTRUCTION.



HOTEL RESIDENCE COLLECTION

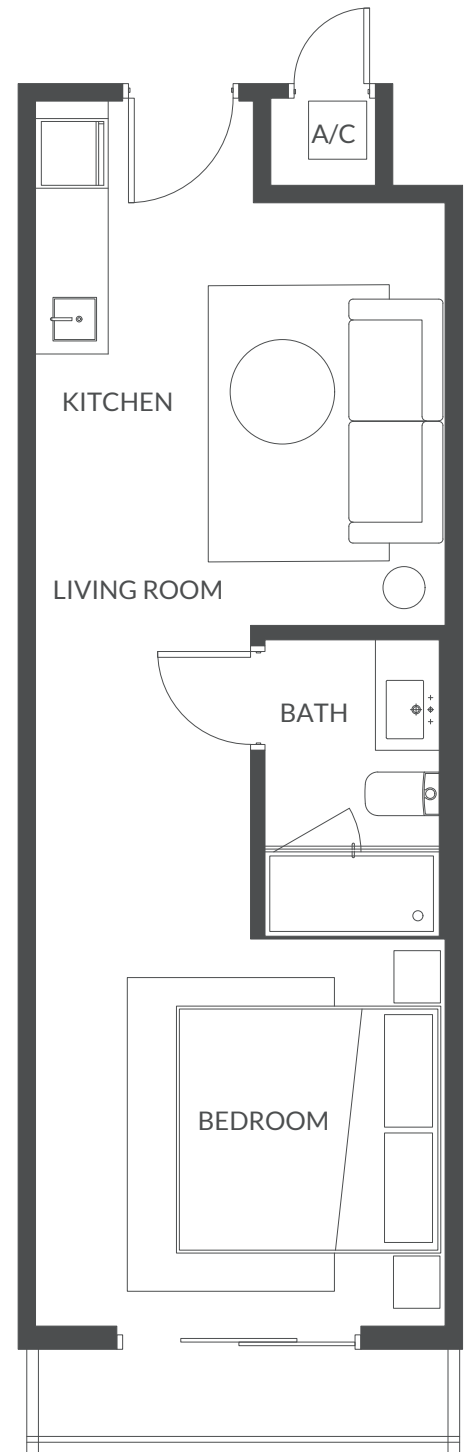
Line 08
Levels 2 - 3



INTERIOR
408 SF | 38 M2

EXTERIOR
35 SF | 3 M2

TOTAL AREA
443 SF | 41 M2



ARQUITECTONICAINTERIORS

Gensler

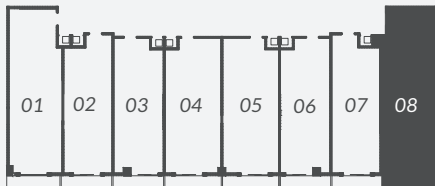


THE ABOVE DRAWINGS ARE CONCEPTUAL ONLY AND ARE SUBJECT TO CHANGE WITHOUT NOTICE AT THE DISCRETION OF THE DEVELOPER. THE DEVELOPER RESERVES THE RIGHT TO MAKE ADDITIONS, DELETIONS AND MODIFICATIONS TO THE DRAWINGS AS THE DEVELOPER MAY DEEM APPROPRIATE OR DESIRABLE. DIMENSIONS AND SQUARE FOOTAGES ARE APPROXIMATE AND MAY VARY WITH ACTUAL CONSTRUCTION.



HOTEL RESIDENCE COLLECTION

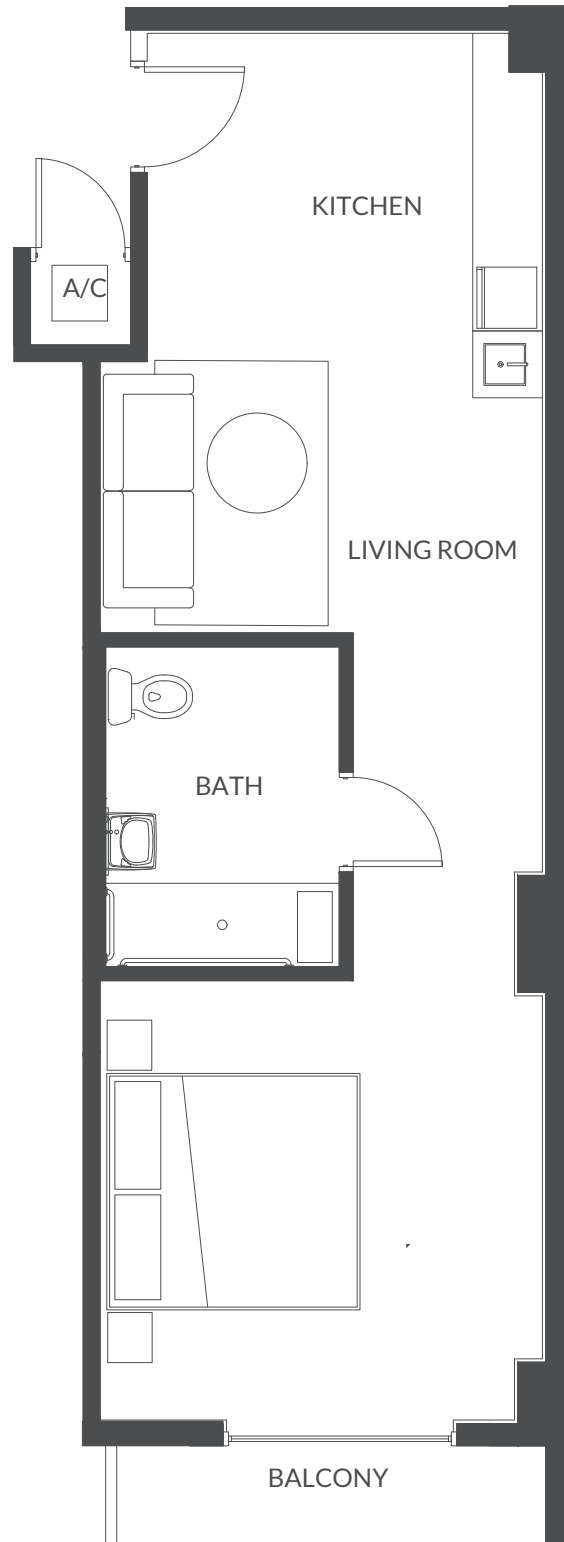
Line 08
Levels 4 - 7



INTERIOR
540 SF | 50 M2

EXTERIOR
38 SF | 4 M2

TOTAL AREA
578 SF | 54 M2



ARQUITECTONICAINTERIORS

Gensler

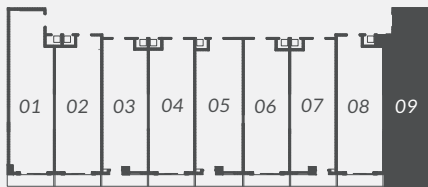


THE ABOVE DRAWINGS ARE CONCEPTUAL ONLY AND ARE SUBJECT TO CHANGE WITHOUT NOTICE AT THE DISCRETION OF THE DEVELOPER. THE DEVELOPER RESERVES THE RIGHT TO MAKE ADDITIONS, DELETIONS AND MODIFICATIONS TO THE DRAWINGS AS THE DEVELOPER MAY DEEM APPROPRIATE OR DESIRABLE. DIMENSIONS AND SQUARE FOOTAGES ARE APPROXIMATE AND MAY VARY WITH ACTUAL CONSTRUCTION.



HOTEL RESIDENCE COLLECTION

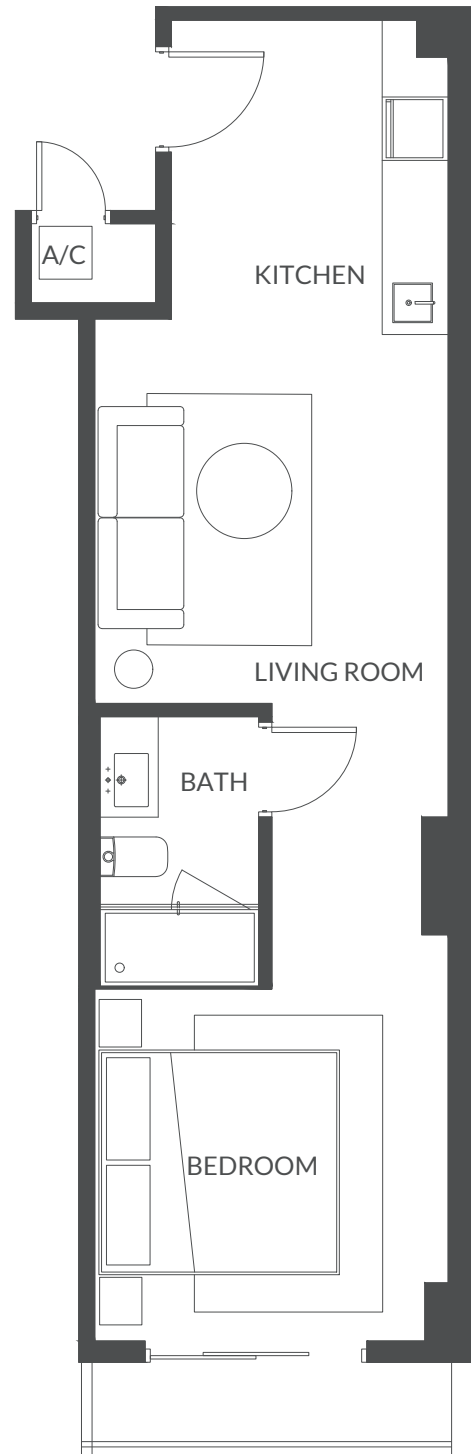
Line 09
Levels 2 - 3



INTERIOR
449 SF | 42 M2

EXTERIOR
34 SF | 3 M2

TOTAL AREA
483 SF | 45 M2

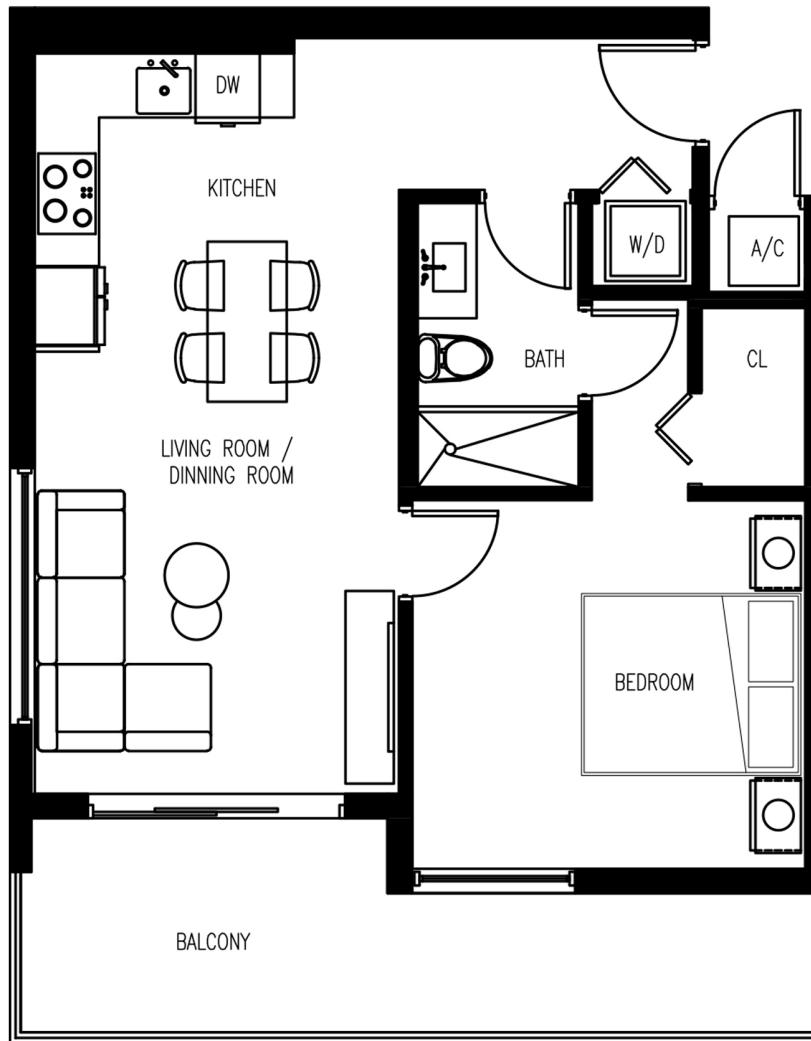


ARQUITECTONICAINTERIORS

Gensler



THE ABOVE DRAWINGS ARE CONCEPTUAL ONLY AND ARE SUBJECT TO CHANGE WITHOUT NOTICE AT THE DISCRETION OF THE DEVELOPER. THE DEVELOPER RESERVES THE RIGHT TO MAKE ADDITIONS, DELETIONS AND MODIFICATIONS TO THE DRAWINGS AS THE DEVELOPER MAY DEEM APPROPRIATE OR DESIRABLE. DIMENSIONS AND SQUARE FOOTAGES ARE APPROXIMATE AND MAY VARY WITH ACTUAL CONSTRUCTION.



Line 01

Level 20 - 23

1 Bedroom / 1 Bathroom

A/C: 573 SQ. FT. / 53 SQ. MT.

Balcony: 133 SQ. FT. / 12 SQ. MT.

Total: 706 SQ. FT. / 65 SQ. MT.

