

INTRACOASTAL

# Residences 102-I & 106-I

2 Bedroom | 3.5 Bathroom & Den

## Residence 102-I

UNIT	3,337 SF
LANAI + POOL	4,419 SF
GARAGE	1,111 SF
TOTAL	8,867 SF

## Residence 106-I

UNIT	3,337 SF
LANAI + POOL	2,494 SF
GARAGE	1,111 SF
TOTAL	6,942 SF

*Intimate Waterfront Living*

## A Rosewood Residence

**DEVELOPERS**  
The Related Group & Dezer Development

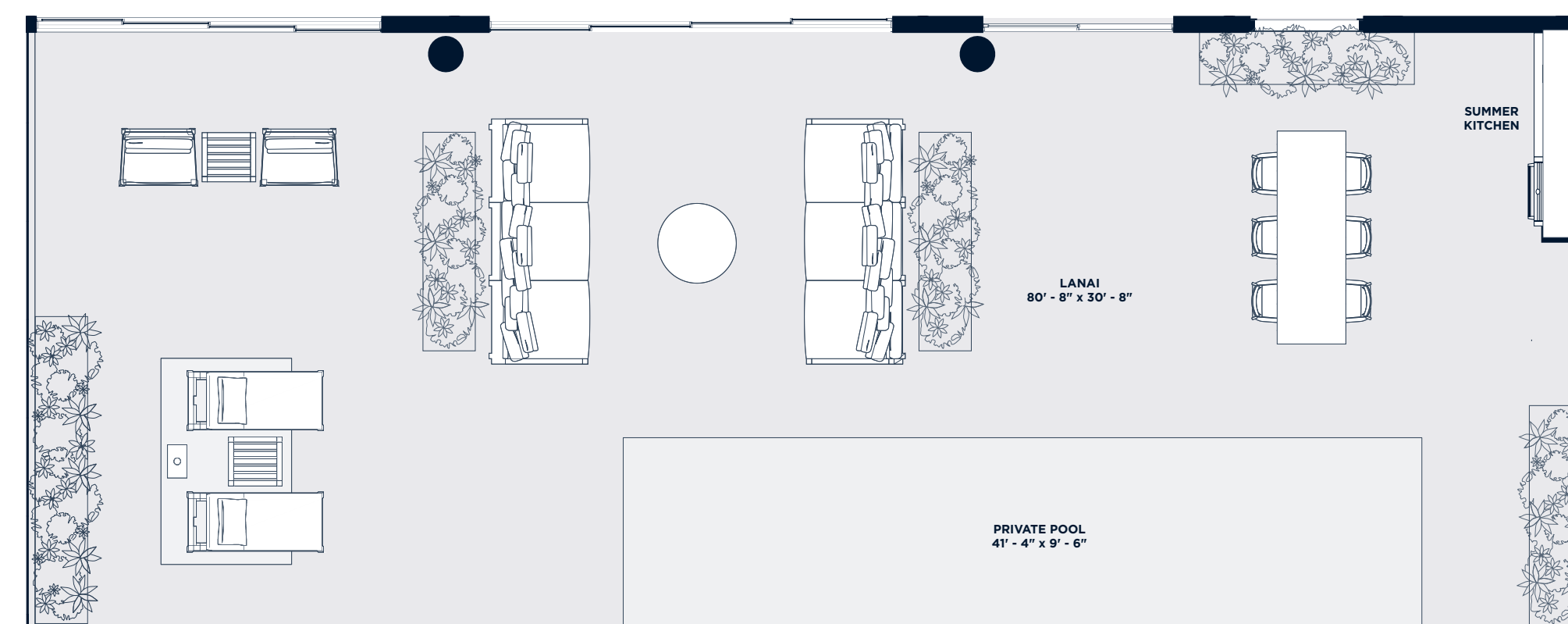
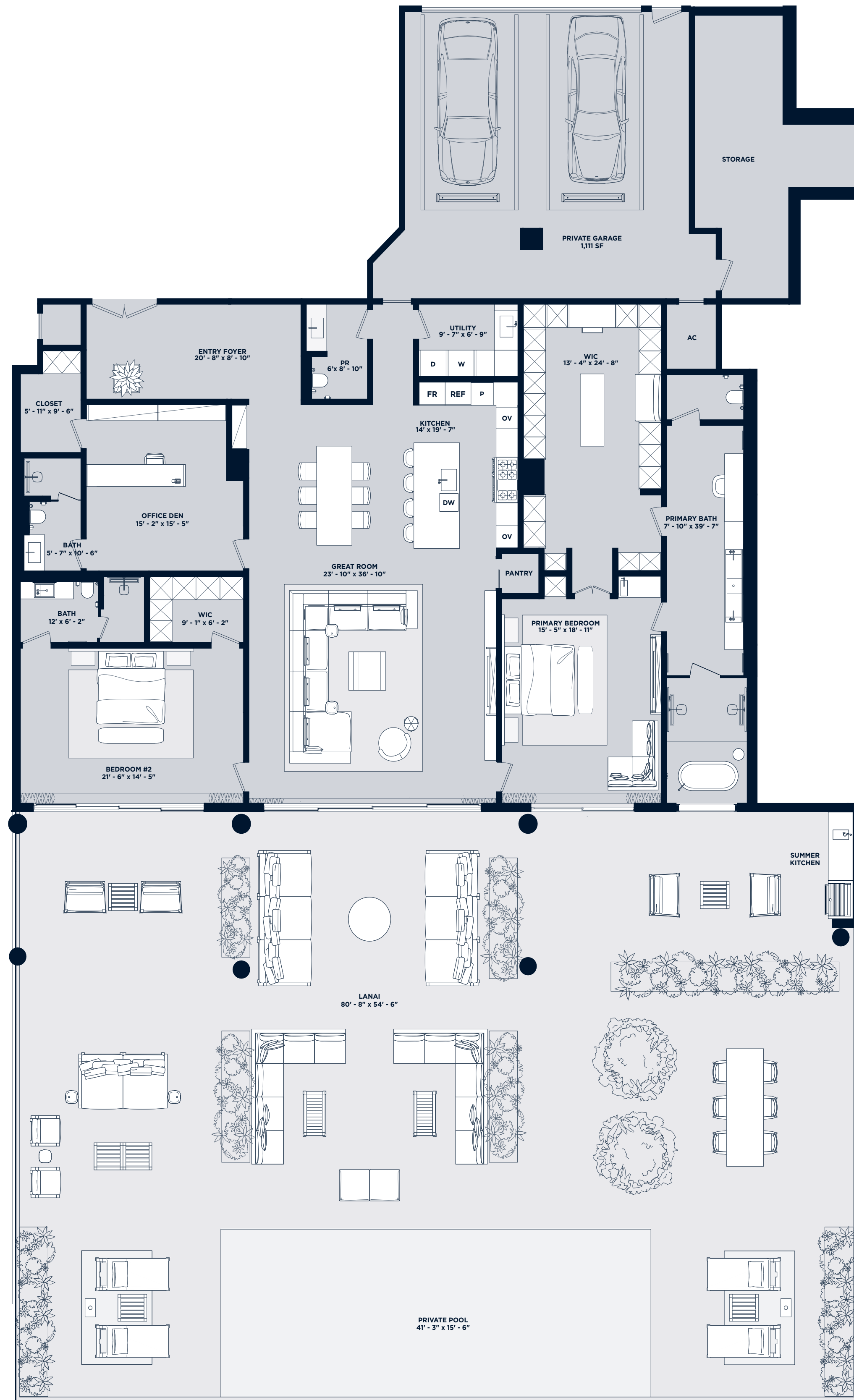
**ARCHITECT**  
Arquitectonica

**INTERIOR DESIGNER**  
Studio Piet Boon

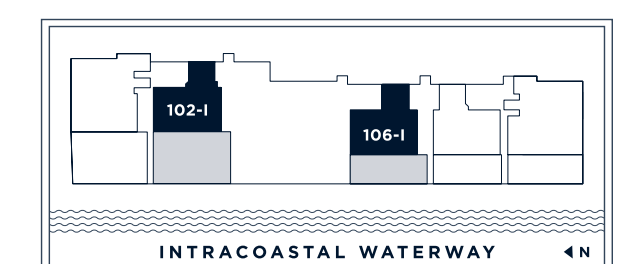
1180 Hillsboro Mile  
Hillsboro Beach, Florida 33062

Inquiries 754 202 1225

Info@ResidencesHillsboroBeach.com  
RESIDENCESHILLSBOROBEACH.COM



RESIDENCE 106 LANAI



**RELATED** **DEZER DEVELOPMENT** **ARQUITECTONICA**

The dimensions stated for this floor plan are approximate because there are various recognized methods for calculating the square footage of a unit. The square footage stated here is calculated from the exterior boundaries of the exterior walls to the centerline of interior opening walls without deductions for closets, curves, or architectural features. This method typically results in quoted dimensions greater than the dimensions that would be determined by using other accepted methods. The definition of "unit" and the calculation method to be relied upon is set forth by the Developer in Developer's prospectus which method may result in a square footage calculation less than the result of the calculation method used here. Renderings depict features not included with purchase, but which are available at an additional cost such as wine bar and closet millwork among others. Consult the Developer's prospectus to learn what is included with Unit purchase and to understand Unit dimensions. 2023 © HILLSBORO MILE PROPERTY OWNER, LLC with all rights reserved.

INTRACOASTAL

# Residence 108-I

2 Bedroom | 3.5 Bathroom & Den

UNIT	3,337 SF
LANAI + POOL	2,216 SF
GARAGE	731 SF
TOTAL	6,284 SF

*Intimate Waterfront Living*

## A Rosewood Residence

DEVELOPERS  
The Related Group & Dezer Development

ARCHITECT  
Arquitectonica

INTERIOR DESIGNER  
Studio Piet Boon

1180 Hillsboro Mile  
Hillsboro Beach, Florida 33062

Inquiries 754 202 1225

Info@ResidencesHillsboroBeach.com  
RESIDENCESHILLSBOROBEACH.COM

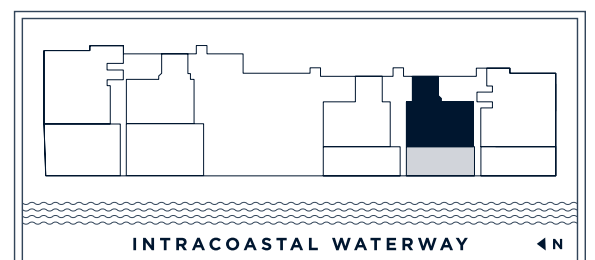


RELATED

DEZER  
MULTIFAMILY

ARQUITECTONICA

The dimensions stated for this floor plan are approximate because there are various recognized methods for calculating the square footage of a unit. The square footage stated here is calculated from the exterior boundaries of the exterior walls to the centerline of interior opening walls without deductions for closets, curves, or architectural features. This method typically results in quoted dimensions greater than the dimensions that would be determined by using other accepted methods. The definition of "unit" and the calculation method to be relied upon is set forth by the Developer in Developer's prospectus which method may result in a square footage calculation less than the result of the calculation method used here. Renderings depict features not included with purchase, but which are available at an additional cost such as wine bar and closet millwork among others. Consult the Developer's prospectus to learn what is included with Unit purchase and to understand Unit dimensions. 2023 © HILLSBORO MILE PROPERTY OWNERS, LLC with all rights reserved.







INTRACOASTAL

# Residences 203-I & 207-I

3 Bedroom | 3.5 Bathroom & Den

## Residence 203-I

UNIT	2,976 SF
BALCONY	1,105 SF
ROOFTOP	2,030 SF
TOTAL	6,111 SF

## Residence 207-I

UNIT	2,976 SF
BALCONY	1,105 SF
ROOFTOP	2,075 SF
TOTAL	6,156 SF

*Intimate Waterfront Living*

## A Rosewood Residence

DEVELOPERS  
The Related Group & Dezer Development

ARCHITECT  
Arquitectonica

INTERIOR DESIGNER  
Studio Piet Boon

1180 Hillsboro Mile  
Hillsboro Beach, Florida 33062

Inquiries 754 202 1225

Info@ResidencesHillsboroBeach.com  
RESIDENCESHILLSBOROBEACH.COM

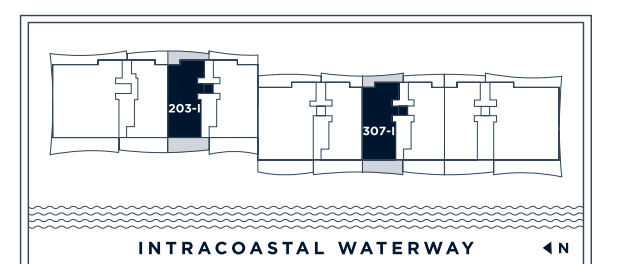


RELATED

DEZER  
MULTIFAMILY

ARQUITECTONICA

The dimensions stated for this floor plan are approximate because there are various recognized methods for calculating the square footage of a unit. The square footage stated here is calculated from the exterior boundaries of the exterior walls to the centerline of interior opening walls without deductions for closets, curves, or architectural features. This method typically results in quoted dimensions greater than the dimensions that would be determined by using other accepted methods. The definition of "unit" and the calculation method to be relied upon is set forth by the Developer in Developer's prospectus which method may result in a square footage calculation less than the result of the calculation method used here. Renderings depict features not included with purchase, but which are available at an additional cost such as wine bar and closet millwork among others. Consult the Developer's prospectus to learn what is included with Unit purchase and to understand Unit dimensions. 2023 © HILLSBORO MILE PROPERTY OWNERS, LLC with all rights reserved.





INTRACOASTAL

# Residences 204-I & 304-I

3 Bedroom | 4.5 Bathroom  
with Den & Flex Space

## Residence 204-I

UNIT	3,689 SF
BALCONY	1,289 SF
ROOFTOP	2,380 SF
TOTAL	7,358 SF

## Residence 304-I

UNIT	3,727 SF
BALCONY	1,289 SF
ROOFTOP	2,800 SF
TOTAL	7,816 SF

*Intimate Waterfront Living*

## A Rosewood Residence

DEVELOPERS  
The Related Group & Dezer Development

ARCHITECT  
Arquitectonica

INTERIOR DESIGNER  
Studio Piet Boon

1180 Hillsboro Mile  
Hillsboro Beach, Florida 33062

Inquiries 754 202 1225

Info@ResidencesHillsboroBeach.com  
RESIDENCESHILLSBOROBEACH.COM

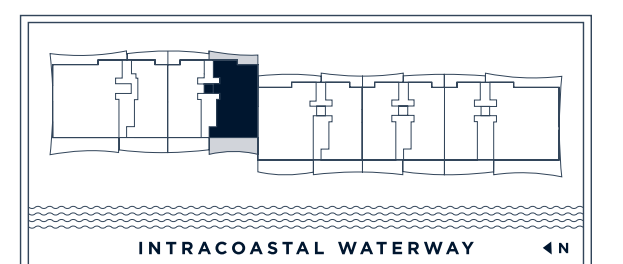
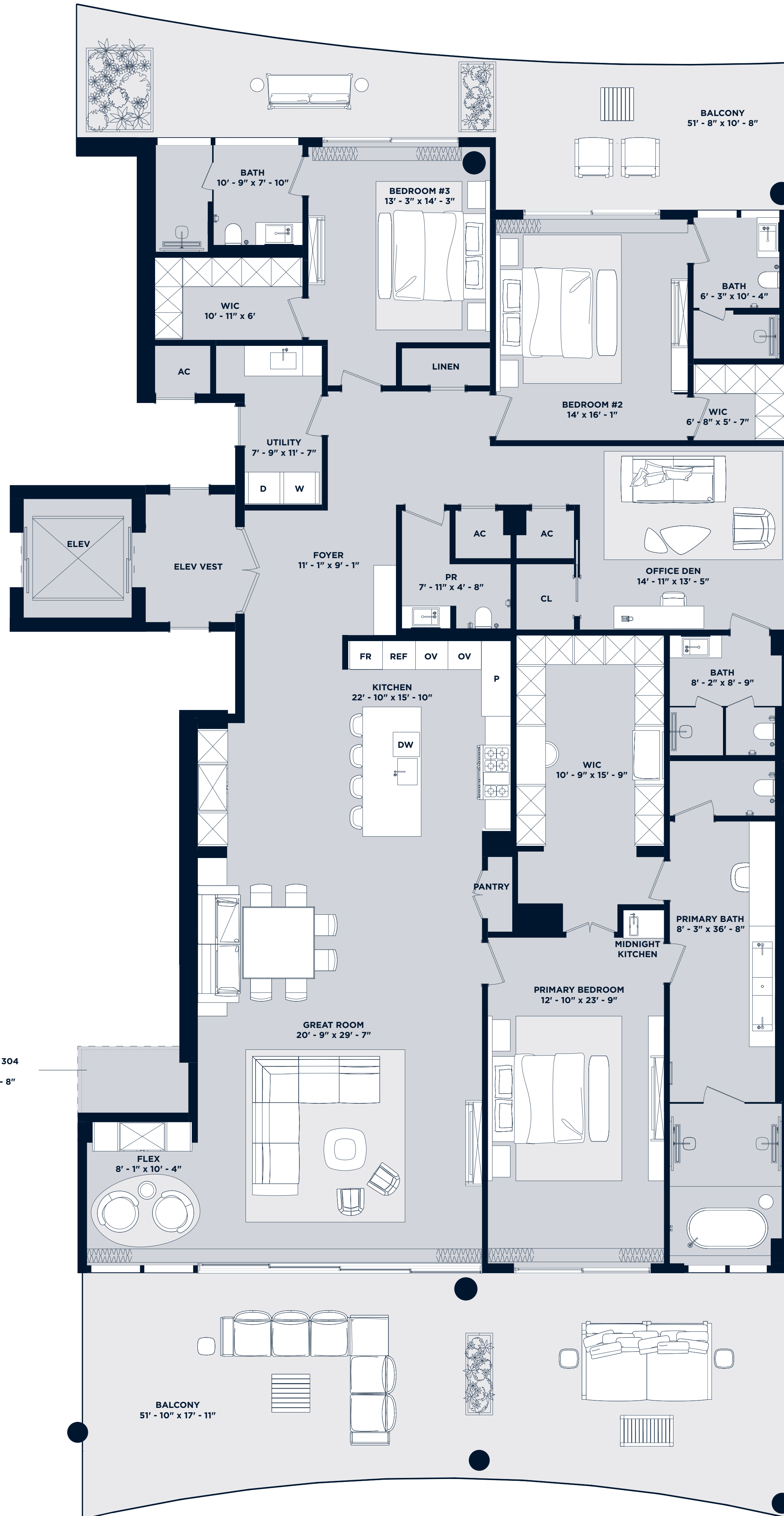


RELATED

DEZER  
MULTIFAMILY

ARQUITECTONICA

The dimensions stated for this floor plan are approximate because there are various recognized methods for calculating the square footage of a unit. The square footage stated here is calculated from the exterior boundaries of the exterior walls to the centerline of interior opening walls without deductions for columns, curves, or architectural features. This method typically results in quoted dimensions greater than the dimensions that would be determined by using other accepted methods. The definition of "unit" and the calculation method to be relied upon is set forth by the Developer in Developer's prospectus which method may result in a square footage calculation less than the result of the calculation method used here. Renderings depict features not included with purchase, but which are available at an additional cost such as wine bar and closet millwork among others. Consult the Developer's prospectus to learn what is included with Unit purchase and to understand Unit dimensions. 2023 © HILLSBORO MILE PROPERTY OWNERS, LLC with all rights reserved.



INTRACOASTAL WATERWAY 4N

INTRACOASTAL

# Residence 206-I

3 Bedroom | 3.5 Bathroom  
with Den & Flex Space

UNIT	3,056 SF
BALCONY	1,129 SF
ROOFTOP	1,930 SF
TOTAL	6,115 SF

*Intimate Waterfront Living*

## A Rosewood Residence

**DEVELOPERS**  
The Related Group & Dezer Development

**ARCHITECT**  
Arquitectonica

**INTERIOR DESIGNER**  
Studio Piet Boon

1180 Hillsboro Mile  
Hillsboro Beach, Florida 33062

Inquiries 754 202 1225

Info@ResidencesHillsboroBeach.com  
RESIDENCESHILLSBOROBEACH.COM

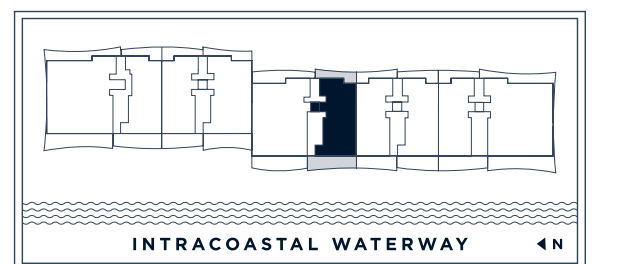


RELATED

DEZER  
MULTIFAMILY

ARQUITECTONICA

The dimensions stated for this floor plan are approximate because there are various recognized methods for calculating the square footage of a unit. The square footage stated here is calculated from the exterior boundaries of the exterior walls to the centerline of interior opening walls without deductions for closets, curves, or architectural features. This method typically results in quoted dimensions greater than the dimensions that would be determined by using other accepted methods. The definition of "unit" and the calculation method to be relied upon is set forth by the Developer in Developer's prospectus which method may result in a square footage calculation less than the result of the calculation method used here. Renderings depict features not included with purchase, but which are available at an additional cost such as wine bar and closet millwork among others. Consult the Developer's prospectus to learn what is included with Unit purchase and to understand Unit dimensions. 2023 © HILLSBORO MILE PROPERTY OWNERS, LLC with all rights reserved.





INTRACOASTAL

# Residence 208-I

3 Bedroom | 3.5 Bathroom  
with Den & Flex Space

UNIT	3,056 SF
BALCONY	1,073 SF
ROOFTOP	1,945 SF
TOTAL	6,074 SF

*Intimate Waterfront Living*

## A Rosewood Residence

DEVELOPERS  
The Related Group & Dezer Development

ARCHITECT  
Arquitectonica

INTERIOR DESIGNER  
Studio Piet Boon

1180 Hillsboro Mile  
Hillsboro Beach, Florida 33062

Inquiries 754 202 1225

Info@ResidencesHillsboroBeach.com  
RESIDENCESHILLSBOROBEACH.COM

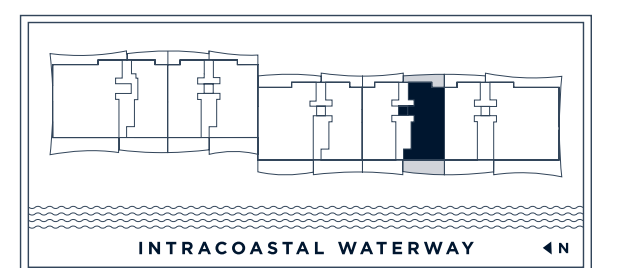


RELATED

DEZER DEVELOPMENT

ARQUITECTONICA

The dimensions stated for this floor plan are approximate because there are various recognized methods for calculating the square footage of a unit. The square footage stated here is calculated from the exterior boundaries of the exterior walls to the centerline of interior opening walls without deductions for alcoves, curves, or architectural features. This method typically results in quoted dimensions greater than the dimensions that would be determined by using other accepted methods. The definition of "unit" and the calculation method to be relied upon is set forth by the Developer in Developer's prospectus which method may result in a square footage calculation less than the result of the calculation method used here. Renderings depict features not included with purchase, but which are available at an additional cost such as wine bar and closet millwork among others. Consult the Developer's prospectus to learn what is included with Unit purchase and to understand Unit dimensions. 2023 © HILLSBORO MILE PROPERTY OWNERS, LLC with all rights reserved.



INTRACOASTAL

# Residence 209-I

3 Bedroom | 3.5 Bathroom  
with Den & Flex Space

UNIT	3,056 SF
BALCONY	1,213 SF
ROOFTOP	1,890 SF
TOTAL	6,159 SF

*Intimate Waterfront Living*

## A Rosewood Residence

DEVELOPERS  
The Related Group & Dezer Development

ARCHITECT  
Arquitectonica

INTERIOR DESIGNER  
Studio Piet Boon

1180 Hillsboro Mile  
Hillsboro Beach, Florida 33062

Inquiries 754 202 1225

Info@ResidencesHillsboroBeach.com  
RESIDENCESHILLSBOROBEACH.COM

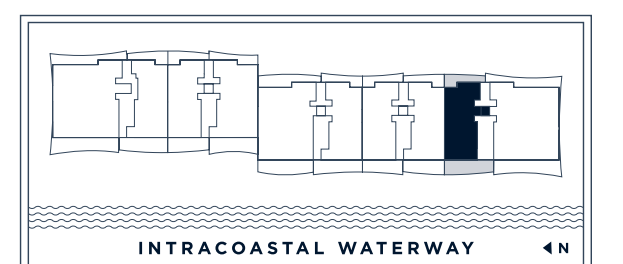


RELATED

DEZER  
MULTIFAMILY

ARQUITECTONICA

The dimensions stated for this floor plan are approximate because there are various recognized methods for calculating the square footage of a unit. The square footage stated here is calculated from the exterior boundaries of the exterior walls to the centerline of interior opening walls without deductions for closets, surveys, or architectural features. This method typically results in quoted dimensions greater than the dimensions that would be determined by using other accepted methods. The definition of "unit" and the calculation method to be relied upon is set forth by the Developer in Developer's prospectus which method may result in a square footage calculation less than the result of the calculation method used here. Renderings depict features not included with purchase, but which are available at an additional cost such as wine bar and closet millwork among others. Consult the Developer's prospectus to learn what is included with Unit purchase and to understand Unit dimensions. 2023 © HILLSBORO MILE PROPERTY OWNERS, LLC with all rights reserved.



INTRACOASTAL WATERWAY 4N



INTRACOASTAL

# Residence 101-I

4 Bedroom | 5.5 Bathroom  
with Den & Service Quarters

UNIT	5,661 SF
LANAI + POOL	4,348 SF
GARAGE	621 SF
TOTAL	10,630 SF

*Intimate Waterfront Living*

*A Rosewood Residence*

DEVELOPERS  
The Related Group & Dezer Development

ARCHITECT  
Arquitectonica

INTERIOR DESIGNER  
Studio Piet Boon

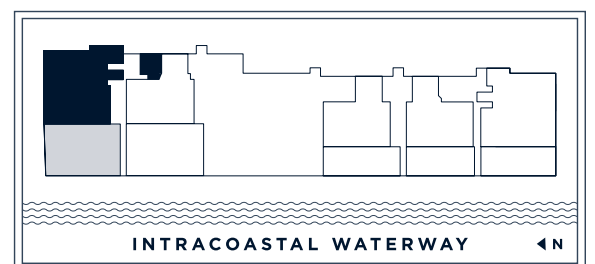
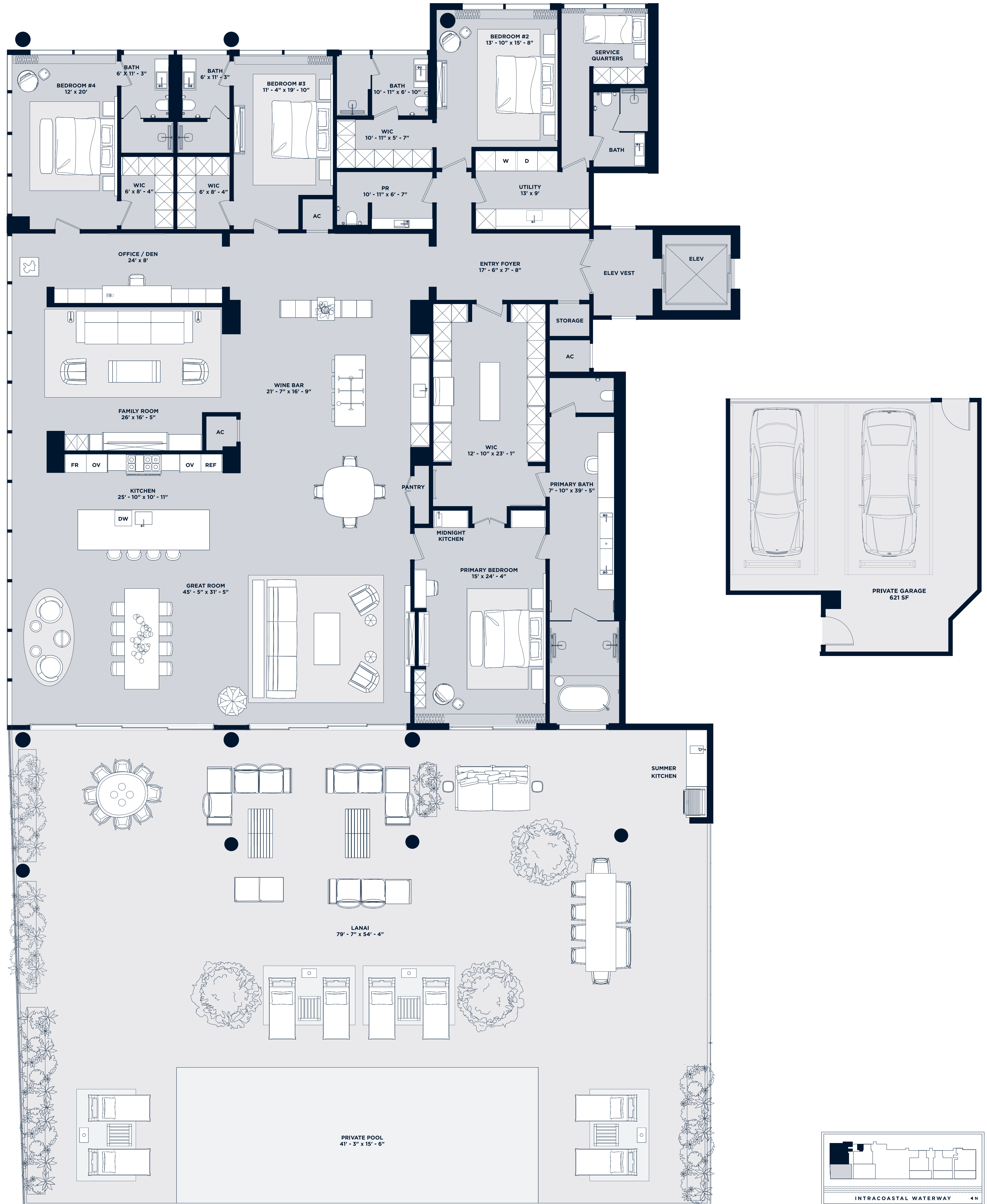
1180 Hillsboro Mile  
Hillsboro Beach, Florida 33062

Inquiries 754 202 1225

Info@ResidencesHillsboroBeach.com  
RESIDENCESHILLSBOROBEACH.COM



The dimensions stated for this floor plan are approximate because there are various recognized methods for calculating the square footage of a unit. The square footage stated here is calculated from the exterior boundaries of the exterior walls to the centerline of interior opening walls without deductions for alcoves, curves, or architectural features. This method typically results in quoted dimensions greater than the dimensions that would be determined by using other accepted methods. The definition of "unit" and the calculation method to be relied upon is set forth by the Developer in Developer's prospectus which method may result in a square footage calculation less than the result of the calculation method used here. Renderings depict features not included with purchase, but which are available at an additional cost such as wine bar and closet millwork among others. Consult the Developer's prospectus to learn what is included with Unit purchase and to understand Unit dimensions. 2023 © HILLSBORO MILE PROPERTY OWNER, LLC with all rights reserved.



INTRACOASTAL

# Residence 110-I

4 Bedroom | 5.5 Bathroom  
with Den & Service Quarters

UNIT	5,661 SF
LANAI + POOL	2,460 SF
GARAGE	622 SF
TOTAL	8,743 SF

*Intimate Waterfront Living*

## A Rosewood Residence

DEVELOPERS  
The Related Group & Dezer Development

ARCHITECT  
Arquitectonica

INTERIOR DESIGNER  
Studio Piet Boon

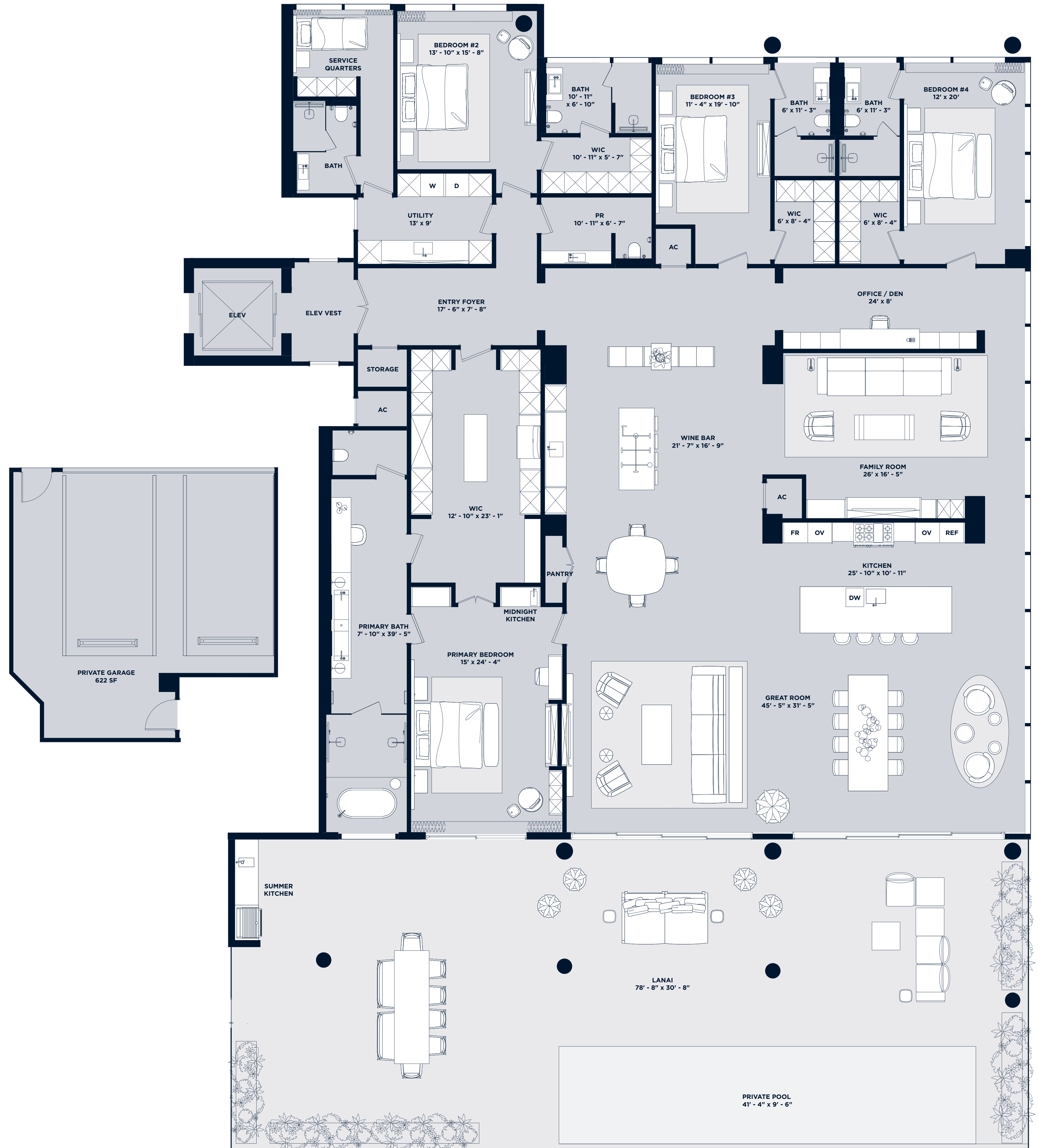
1180 Hillsboro Mile  
Hillsboro Beach, Florida 33062

Inquiries 754 202 1225

Info@ResidencesHillsboroBeach.com  
RESIDENCESHILLSBOROBEACH.COM



The dimensions stated for this floor plan are approximate because there are various recognized methods for calculating the square footage of a unit. The square footage stated here is calculated from the exterior boundaries of the exterior walls to the centerline of interior opening walls without deductions for closets, curves, or architectural features. This method typically results in quoted dimensions greater than the dimensions that would be determined by using other accepted methods. The definition of "unit" and the calculation method to be relied upon is set forth by the Developer in Developer's prospectus which method may result in a square footage calculation less than the result of the calculation method used here. Renderings depict features not included with purchase, but which are available at an additional cost such as wine bar and closet millwork among others. Consult the Developer's prospectus to learn what is included with Unit purchase and to understand Unit dimensions. 2023 © HILLSBORO MILE PROPERTY OWNERS, LLC with all rights reserved.



INTRACOASTAL WATERWAY 4N



INTRACOASTAL

# Residences 201-I & 301-I

4 Bedroom | 5.5 Bathroom  
with Den & Service Quarters

## Residence 201-I

UNIT	5,661 SF
BALCONY	1,858 SF
ROOFTOP	3,653 SF
TOTAL	11,172 SF

## Residence 301-I

UNIT	5,661 SF
BALCONY	1,858 SF
ROOFTOP	3,818 SF
TOTAL	11,337 SF

### Intimate Waterfront Living

### A Rosewood Residence

DEVELOPERS  
The Related Group & Dezer Development

ARCHITECT  
Arquitectonica

INTERIOR DESIGNER  
Studio Piet Boon

1180 Hillsboro Mile  
Hillsboro Beach, Florida 33062

Inquiries 754 202 1225

Info@ResidencesHillsboroBeach.com  
RESIDENCESHILLSBOROBEACH.COM

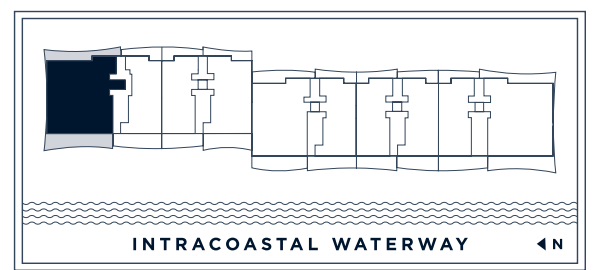


RELATED

DEZER DEVELOPMENT

ARQUITECTONICA

The dimensions stated for this floor plan are approximate because there are various recognized methods for calculating the square footage of a unit. The square footage stated here is calculated from the exterior boundaries of the exterior walls to the centerline of interior opening walls without deductions for closets, curves, or architectural features. This method typically results in quoted dimensions greater than the dimensions that would be determined by using other accepted methods. The definition of "unit" and the calculation method to be relied upon is set forth by the Developer in Developer's prospectus which method may result in a square footage calculation less than the result of the calculation method used here. Renderings depict features not included with purchase, but which are available at an additional cost such as wine bar and closet millwork among others. Consult the Developer's prospectus to learn what is included with Unit purchase and to understand Unit dimensions. 2023 © HILLSBORO MILE PROPERTY OWNERS, LLC with all rights reserved.



INTRACOASTAL

# Residences 205-I & 305-I

5 Bedroom | 5.5 Bathroom

## Residence 205-I

UNIT 4,762 SF  
BALCONY 1,624 SF  
ROOFTOP 3,020 SF  
TOTAL 9,406 SF

## Residence 305-I

UNIT 4,762 SF  
BALCONY 1,624 SF  
ROOFTOP 3,120 SF  
TOTAL 9,506 SF

### Intimate Waterfront Living

### A Rosewood Residence

DEVELOPERS  
The Related Group & Dezer Development

ARCHITECT  
Arquitectonica

INTERIOR DESIGNER  
Studio Piet Boon

1180 Hillsboro Mile  
Hillsboro Beach, Florida 33062

Inquiries 754 202 1225

Info@ResidencesHillsboroBeach.com  
RESIDENCESHILLSBOROBEACH.COM

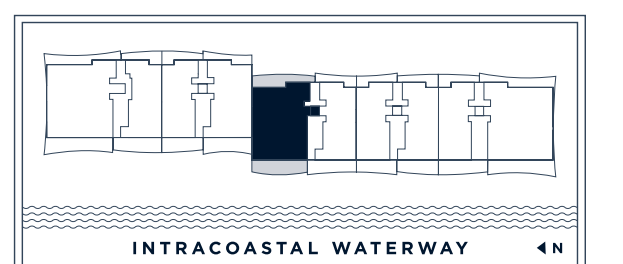


RELATED

DEZER  
MULTIFAMILY

ARQUITECTONICA

The dimensions stated for this floor plan are approximate because there are various recognized methods for calculating the square footage of a unit. The square footage stated here is calculated from the exterior boundaries of the exterior walls to the centerline of interior opening walls without deductions for closets, curves, or architectural features. This method typically results in quoted dimensions greater than the dimensions that would be determined by using other accepted methods. The definition of "unit" and the calculation method to be relied upon is set forth by the Developer in Developer's prospectus which method may result in a square footage calculation less than the result of the calculation method used here. Renderings depict features not included with purchase, but which are available at an additional cost such as wine bar and closet millwork among others. Consult the Developer's prospectus to learn what is included with Unit purchase and to understand Unit dimensions. 2023 © HILLSBORO MILE PROPERTY OWNERS, LLC with all rights reserved.



INTRACOASTAL WATERWAY 4N



INTRACOASTAL

# Residences 302-I & 306-I

5 Bedroom | 5.5 Bathroom  
with Flex Space, Den & Family Room

## Residence 302-I

UNIT	6,419 SF
BALCONY	2,347 SF
ROOFTOP	4,330 SF
TOTAL	13,096 SF

## Residence 306-I

UNIT	6,419 SF
BALCONY	2,347 SF
ROOFTOP	4,100 SF
TOTAL	12,866 SF

*Intimate Waterfront Living*

## A Rosewood Residence

DEVELOPERS  
The Related Group & Dezer Development

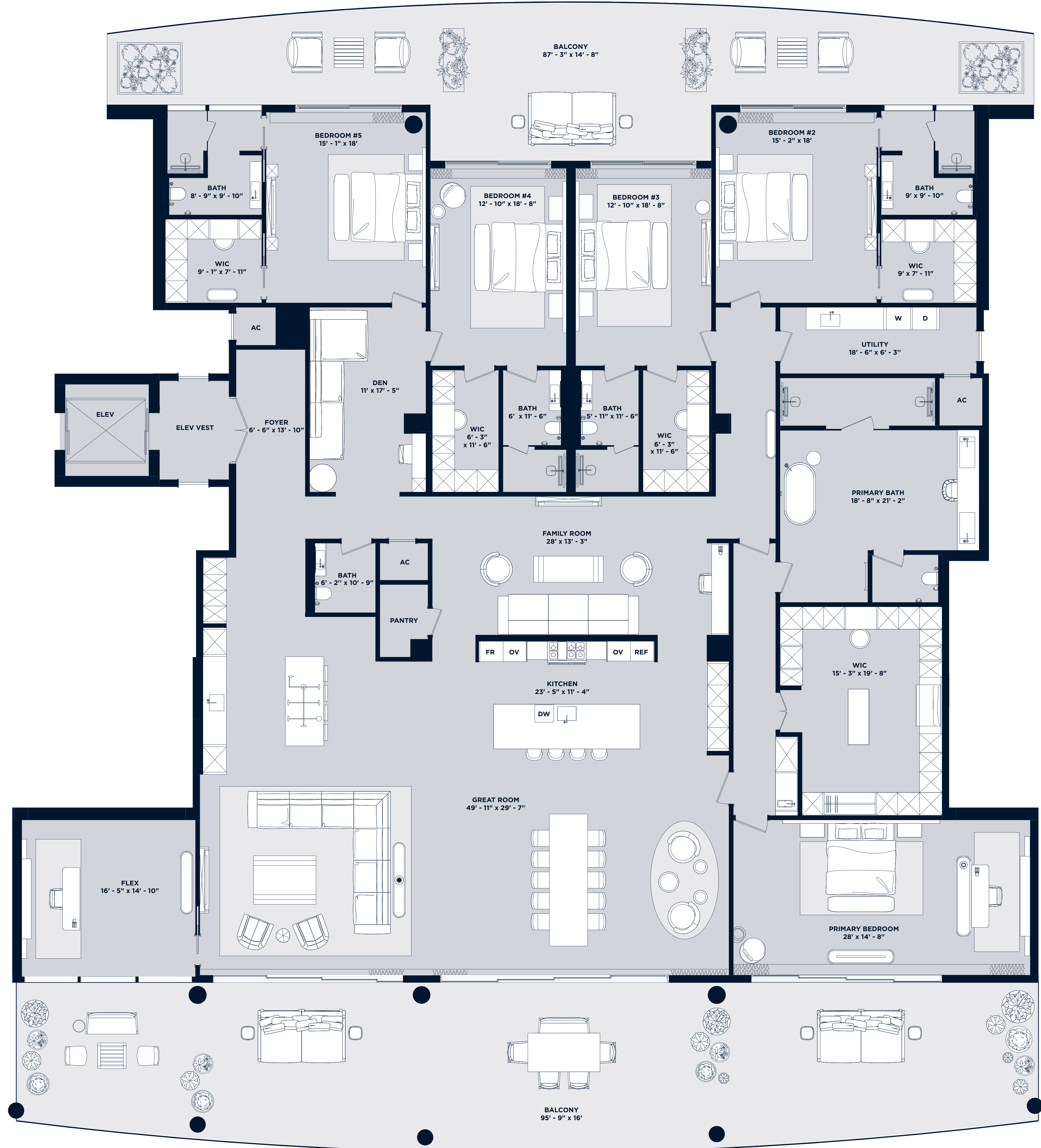
ARCHITECT  
Arquitectonica

INTERIOR DESIGNER  
Studio Piet Bonn

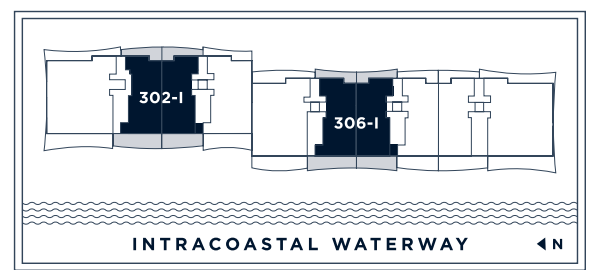
1180 Hillsboro Mile  
Hillsboro Beach, Florida 33062

Inquiries 754 202 1225

Info@ResidencesHillsboroBeach.com  
RESIDENCESHILLSBOROBEACH.COM



The dimensions stated for this floor plan are approximate because there are various recognized methods for calculating the square footage of a unit. The square footage stated here is calculated from the exterior boundaries of the exterior walls to the centerline of interior opening walls without deductions for closets, curves, or architectural features. This method typically results in quoted dimensions greater than the dimensions that would be determined by using other accepted methods. The definition of "unit" and the calculation method to be relied upon is set forth by the Developer in Developer's prospectus which method may result in a square footage calculation less than the result of the calculation method used here. Renderings depict features not included with purchase, but which are available at an additional cost such as wine bar and closet millwork among others. Consult the Developer's prospectus to learn what is included with Unit purchase and to understand Unit dimensions. 2023 © HILLSBORO MILE PROPERTY OWNERS, LLC, with all rights reserved.



INTRACOASTAL

# Residence 308-I

5 Bedroom | 5.5 Bathroom  
with Flex Space, Den & Family Room

UNIT	6,419 SF
BALCONY	2,347 SF
ROOFTOP	4,330 SF
TOTAL	13,096 SF

*Intimate Waterfront Living*

## A Rosewood Residence

DEVELOPERS  
The Related Group & Dezer Development

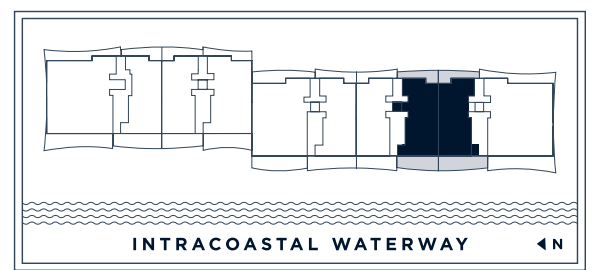
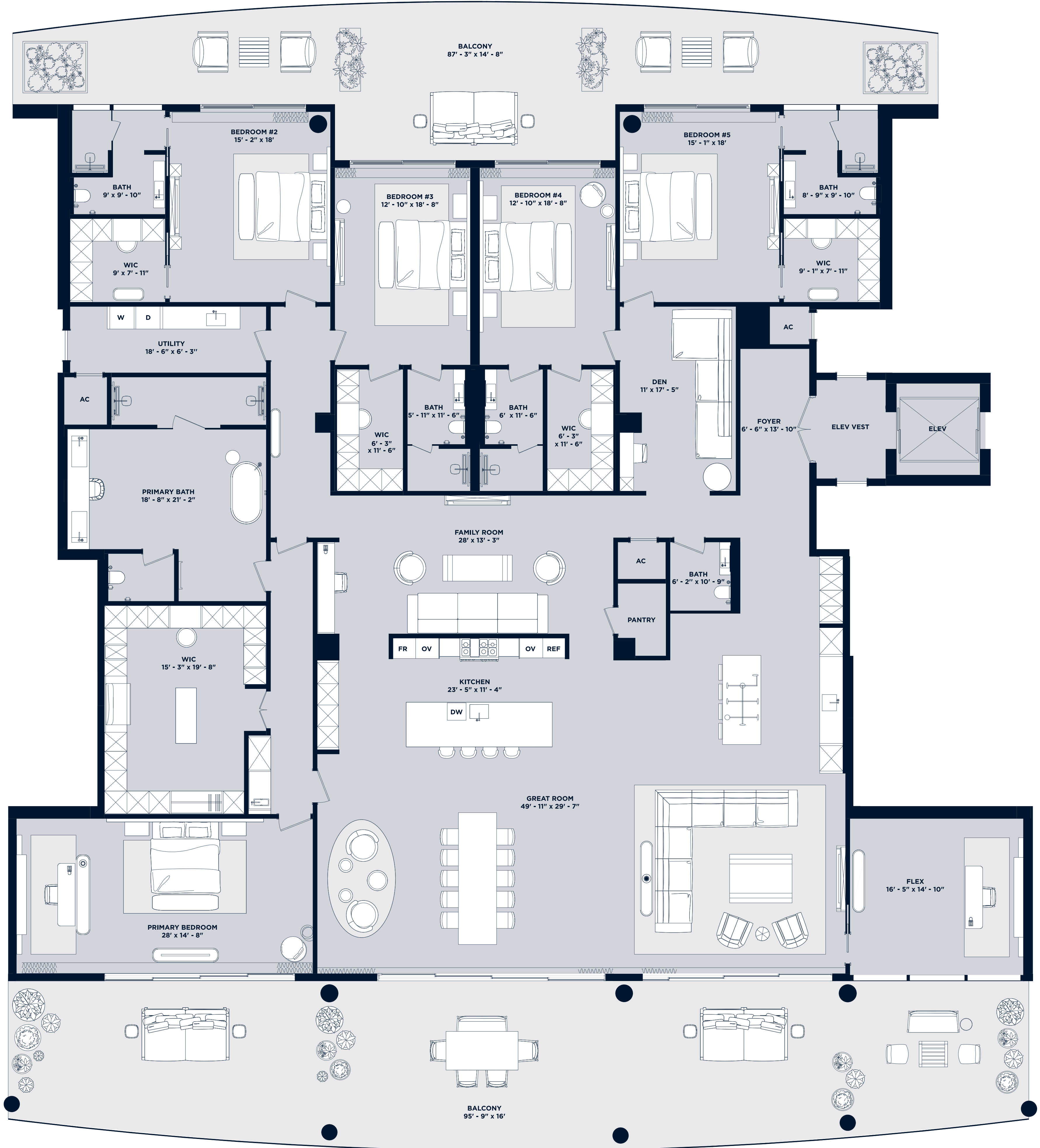
ARCHITECT  
Arquitectonica

INTERIOR DESIGNER  
Studio Piet Boon

1180 Hillsboro Mile  
Hillsboro Beach, Florida 33062

Inquiries 754 202 1225

Info@ResidencesHillsboroBeach.com  
RESIDENCESHILLSBOROBEACH.COM



INTRACOASTAL WATERWAY 4N

The dimensions stated for this floor plan are approximate because there are various recognized methods for calculating the square footage of a unit. The square footage stated here is calculated from the exterior boundaries of the exterior walls to the centerline of interior dividing walls without deductions for closets, curves, or architectural features. This method typically results in quoted dimensions greater than the dimensions that would be determined by using other accepted methods. The definition of "unit" and the calculation method to be relied upon is set forth by the Developer in Developer's prospectus which method may result in a square footage calculation less than the result of the calculation method used here. Renderings depict features not included with purchase, but which are available at an additional cost such as wine bar and closet millwork among others. Consult the Developer's prospectus to see what is included with Unit purchase and to understand Unit dimensions. 2023 © HILLSBORO MILE PROPERTY OWNERS, LLC with all rights reserved.



INTRACOASTAL

# Residences 210-I & 310-I

4 Bedroom | 5.5 Bathroom  
with Den & Service Quarters

## Residence 210-I

UNIT	5,661 SF
BALCONY	1,830 SF
ROOFTOP	3,745 SF
TOTAL	11,236 SF

## Residence 310-I

UNIT	5,661 SF
BALCONY	1,830 SF
ROOFTOP	3,835 SF
TOTAL	11,326 SF

*Intimate Waterfront Living*

## A Rosewood Residence

DEVELOPERS  
The Related Group & Dezer Development

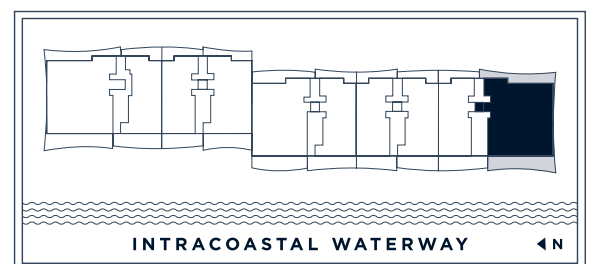
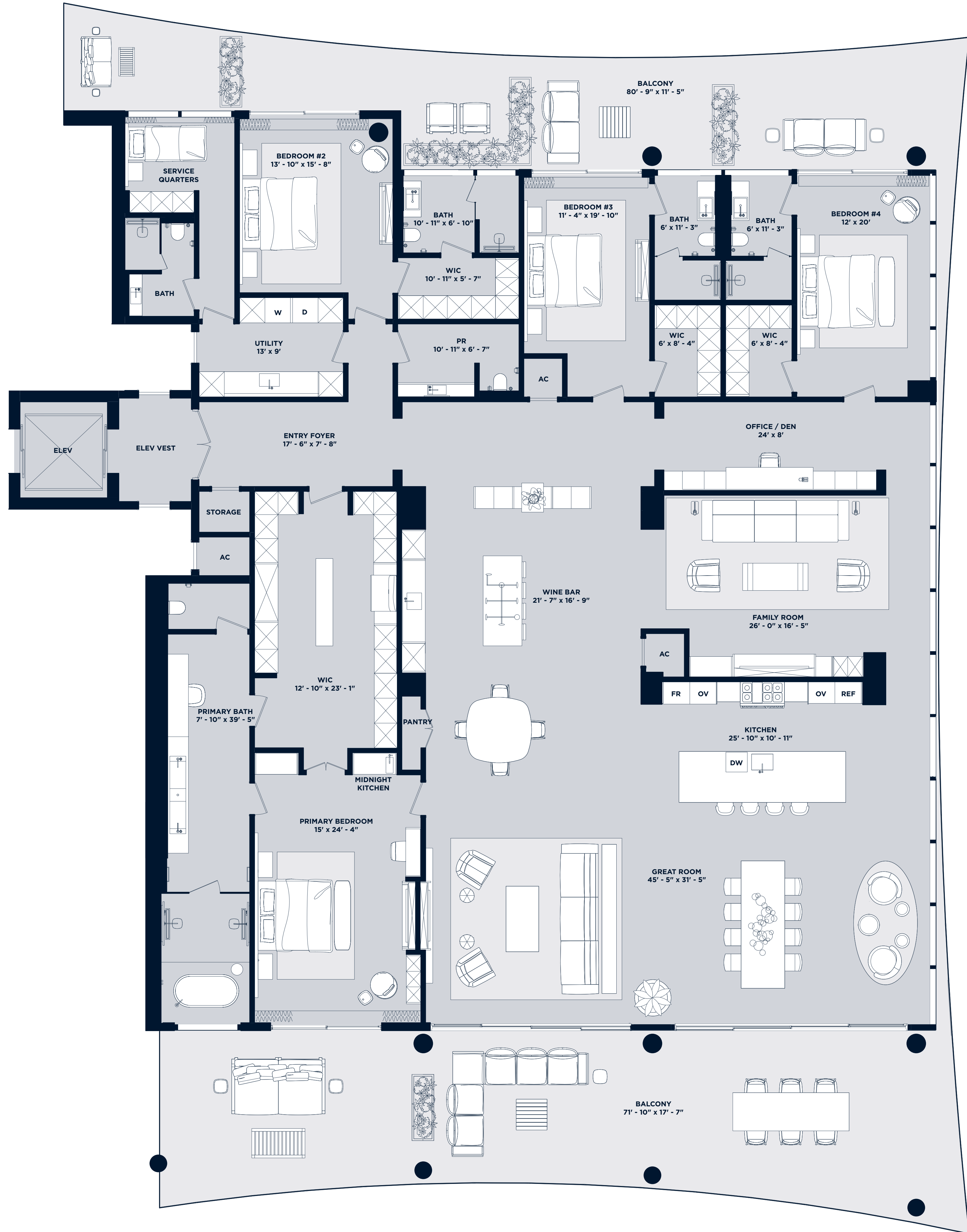
ARCHITECT  
Arquitectonica

INTERIOR DESIGNER  
Studio Piet Boon

1180 Hillsboro Mile  
Hillsboro Beach, Florida 33062

Inquiries 754 202 1225

Info@ResidencesHillsboroBeach.com  
RESIDENCESHILLSBOROBEACH.COM



The dimensions stated for this floor plan are approximate because there are various recognized methods for calculating the square footage of a unit. The square footage stated here is calculated from the exterior boundaries of the exterior walls to the centerline of interior dividing walls without deductions for closets, curves, or architectural features. This method typically results in quoted dimensions greater than the dimensions that would be determined by using other accepted methods. The definition of "unit" and the calculation method to be relied upon is set forth by the Developer in Developer's prospectus which method may result in a square footage calculation less than the result of the calculation method used here. Renderings depict features not included with purchase, but which are available at an additional cost such as wine bar and closet millwork among others. Consult the Developer's prospectus to learn what is included with Unit purchase and to understand Unit dimensions. 2023 © HILLSBORO MILE PROPERTY OWNERS, LLC with all rights reserved.

ROSEWOOD  
RESIDENCES  
*HILLSBORO BEACH*



ROSEWOOD  
RESIDENCES  
HILLSBORO BEACH

INTRACOASTAL  
1<sup>st</sup> Floor



DEVELOPERS  
The Related Group & Dezer Development

ARCHITECT  
Arquitectonica

INTERIOR DESIGNER  
Studio Piet Boon

1180 Hillsboro Mile  
Hillsboro Beach, Florida 33062

Inquiries 754 202 1225

Info@ResidencesHillsboroBeach.com

RESIDENCESHILLSBOROBEACH.COM



ORAL REPRESENTATIONS CANNOT BE RELIED UPON AS CORRECTLY STATING REPRESENTATIONS OF THE DEVELOPER. FOR CORRECT REPRESENTATIONS, MAKE REFERENCE TO THIS BROCHURE AND THE DOCUMENTS REQUIRED BY SECTION 718.05, FLORIDA STATUTES, TO BE FURNISHED BY A DEVELOPER TO A BUYER OR LESSEE.

New York Residents: THE COMPLETE OFFERING TERMS ARE FOUND IN A CPSSD APPLICATION AVAILABLE FROM THE OFFEROR. FILE NO. CP23-0067.

WARNING: THE CALIFORNIA DEPARTMENT OF REAL ESTATE HAS NOT INSPECTED, EXAMINED, OR QUALIFIED THIS OFFERING.

1180 HILLSBORO MILE CONDOMINIUM (the "Condominium") is marketed as Rosewood Residences Hillsboro Beach and is developed by Hillsboro Mile Property Owners, LLC ("Developer") which is the member of The Related Group, Dezer Development, and of Rosewood Hotels and Resorts, LLC under license agreements. Rosewood Hotels and Resorts, LLC is not the offeror and makes no representations with respect to any aspect of the Condominium. This is not intended to be an offer to sell or solicitation of an offer to buy a condominium unit or to residents of any jurisdiction when prohibited by law. There is no guarantee of any view or of any proposed amenities, artwork, designers, contributing artists, interior designers, fitness facilities, or restaurants will be available as depicted in all or any portion of the rendering of the Condominium. Floor plan renderings are not a representation of the use of space and may depict fixtures and furnishings not included with purchase. Consult the Prospectus of Developer to understand the amenities, proposed budget, terms, conditions, specifications, fees, Unit dimensions, site plans, and to learn what is included with purchase and by payment of required condominium assessments and to understand what amenities require additional fees or payments. The project graphics, renderings, photographs, and text provided herein are copyrighted works owned by the respective developer unless otherwise credited. 2023 HILLSBORO MILE PROPERTY OWNERS, LLC. All rights reserved.



ROSEWOOD  
RESIDENCES  
*HILLSBORO BEACH*



ROSEWOOD  
RESIDENCES  
HILLSBORO BEACH

INTRACOASTAL  
2<sup>nd</sup> Floor



DEVELOPERS  
The Related Group & Dezer Development

ARCHITECT  
Arquitectonica

INTERIOR DESIGNER  
Studio Piet Boon

1180 Hillsboro Mile  
Hillsboro Beach, Florida 33062

Inquiries 754 202 1225

Info@ResidencesHillsboroBeach.com

RESIDENCESHILLSBOROBEACH.COM



ARQUITECTONICA

ORAL REPRESENTATIONS CANNOT BE RELIED UPON AS CORRECTLY STATING REPRESENTATIONS OF THE DEVELOPER. FOR CORRECT REPRESENTATIONS, MAKE REFERENCE TO THIS BROCHURE AND THE DOCUMENTS REQUIRED BY SECTION 718.05, FLORIDA STATUTES, TO BE FURNISHED BY A DEVELOPER TO A BUYER OR LESSEE.  
New York Residents: THE COMPLETE OFFERING TERMS ARE FOUND IN A CPSSD APPLICATION AVAILABLE FROM THE OFFEROR. FILE NO. CR23-0067.  
WARNING: THE CALIFORNIA DEPARTMENT OF REAL ESTATE HAS NOT INSPECTED, EXAMINED, OR QUALIFIED THIS OFFERING.  
1180 HILLSBORO MILE CONDOMINIUM (the "Condominium") is marketed as Rosewood Residences Hillsboro Beach and is developed by Hillsboro Mile Property Owners, LLC ("Developer") which is the member of The Related Group, Dezer Development, and of Rosewood Hotels and Resorts, LLC under license agreements. Rosewood Hotels and Resorts, LLC is not the offeror and makes no representations with respect to any aspect of the Condominium. This is not intended to be an offer to sell, or solicitation of an offer to buy, a condominium unit to residents of any jurisdiction when prohibited by law. There is no guarantee of any view or of any proposed amenities, artwork, designers, contributing artists, interior designers, fitness facilities, or restaurants will be available as depicted in all or any portion of the rendering of the Condominium. Floor plan renderings are not a representation of the use of space and may depict fixtures and furnishings not included with purchase. Consult the Prospectus of Developer to understand the amenities, proposed budget, terms, conditions, specifications, fees, Unit dimensions, site plans, and to learn what is included with purchase and by payment of required condominium assessments and to understand what amenities require additional fees or payments. The project graphics, renderings, photographs, and text provided herein are copyrighted works owned by the respective developer unless otherwise credited. 2023 HILLSBORO MILE PROPERTY OWNERS, LLC. All rights reserved.



ROSEWOOD  
RESIDENCES  
*HILLSBORO BEACH*



ROSEWOOD  
RESIDENCES  
HILLSBORO BEACH

INTRACOASTAL  
3<sup>rd</sup> Floor



DEVELOPERS  
The Related Group & Dezer Development

ARCHITECT  
Arquitectonica

INTERIOR DESIGNER  
Studio Piet Boon

1180 Hillsboro Mile  
Hillsboro Beach, Florida 33062

Inquiries 754 202 1225

Info@ResidencesHillsboroBeach.com

RESIDENCESHILLSBOROBEACH.COM



ARQUITECTONICA

ORAL REPRESENTATIONS CANNOT BE RELIED UPON AS CORRECTLY STATING REPRESENTATIONS OF THE DEVELOPER. FOR CORRECT REPRESENTATIONS, MAKE REFERENCE TO THIS BROCHURE AND THE DOCUMENTS REQUIRED BY SECTION 718.05, FLORIDA STATUTES, TO BE FURNISHED BY A DEVELOPER TO A BUYER OR LESSEE.  
New York Residents: THE COMPLETE OFFERING TERMS ARE FOUND IN A CPSSD APPLICATION AVAILABLE FROM THE OFFEROR FILE NO. CR23-0067.  
WARNING: THE CALIFORNIA DEPARTMENT OF REAL ESTATE HAS NOT INSPECTED, EXAMINED, OR QUALIFIED THIS OFFERING.  
1180 HILLSBORO MILE CONDOMINIUM (the "Condominium") is marketed as Rosewood Residences Hillsboro Beach and is developed by Hillsboro Mile Property Owners, LLC ("Developer") which is the member of The Related Group, Dezer Development, and of Rosewood Hotels and Resorts, LLC under license agreements. Rosewood Hotels and Resorts, LLC is not the offeror and makes no representations with respect to any aspect of the Condominium. This is not intended to be an offer to sell, or solicitation of an offer to buy, a condominium unit to residents of any jurisdiction when prohibited by law. There is no guarantee of any view or of any proposed amenities, artwork, designers, contributing artists, interior designers, fitness facilities, or restaurants will be available as depicted in all or any portion of the rendering of the Condominium. Floor plan renderings are not a representation of the use of space and may depict fixtures and furnishings not included with purchase. Consult the Prospectus of Developer to understand the amenities, proposed budget, terms, conditions, specifications, fees, Unit dimensions, site plans, and to learn what is included with purchase and by payment of required condominium assessments and to understand what amenities require additional fees or payments. The project graphics, renderings, photographs, and text provided herein are copyrighted works owned by the respective developer unless otherwise credited. 2023 HILLSBORO MILE PROPERTY OWNERS, LLC. All rights reserved.