

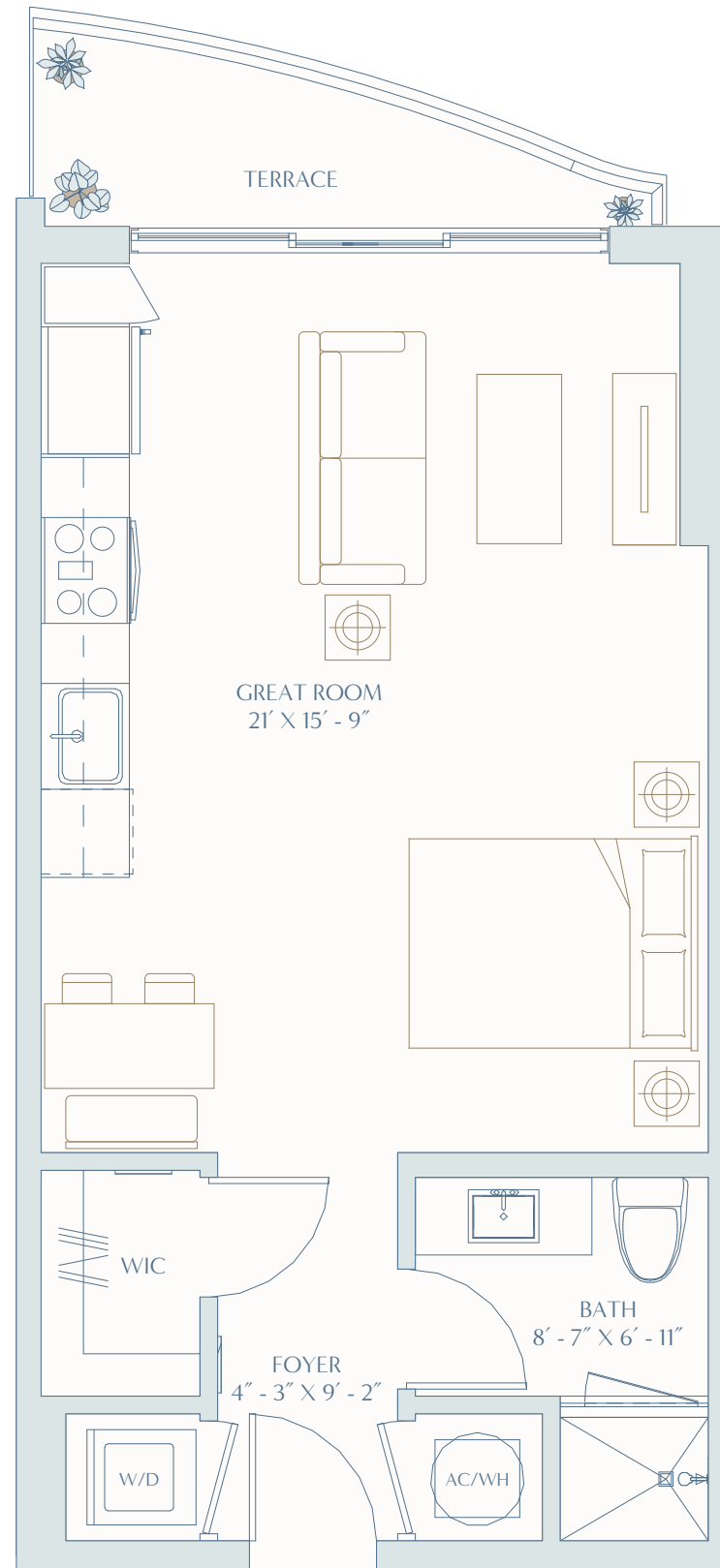
RESIDENCE

A1

STUDIO
1 BATHROOM

INTERIOR
517 SF | 48 M²

TERRACE
54 SF | 5 M²

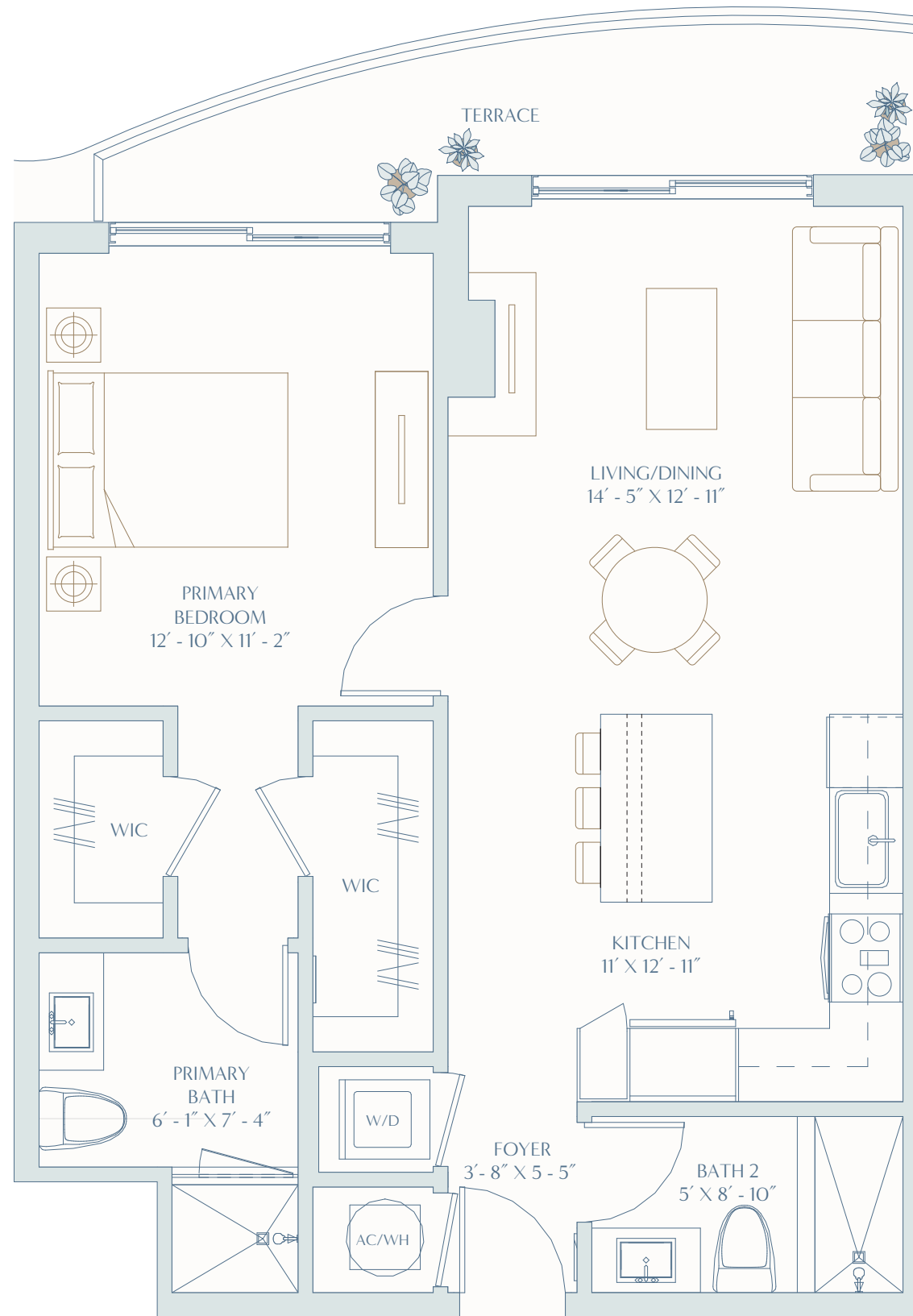


RESIDENCE B1

1 BEDROOMS
2 BATHROOMS

INTERIOR
781 SF | 73 M²

TERRACE
88 SF | 8 M²



ONEHOLLYWOODRESIDENCES.COM

Developed By
STAR
DEVELOPERS GROUP

Exclusive Sales & Marketing By
FORTUNE
DEVELOPMENT
SALES

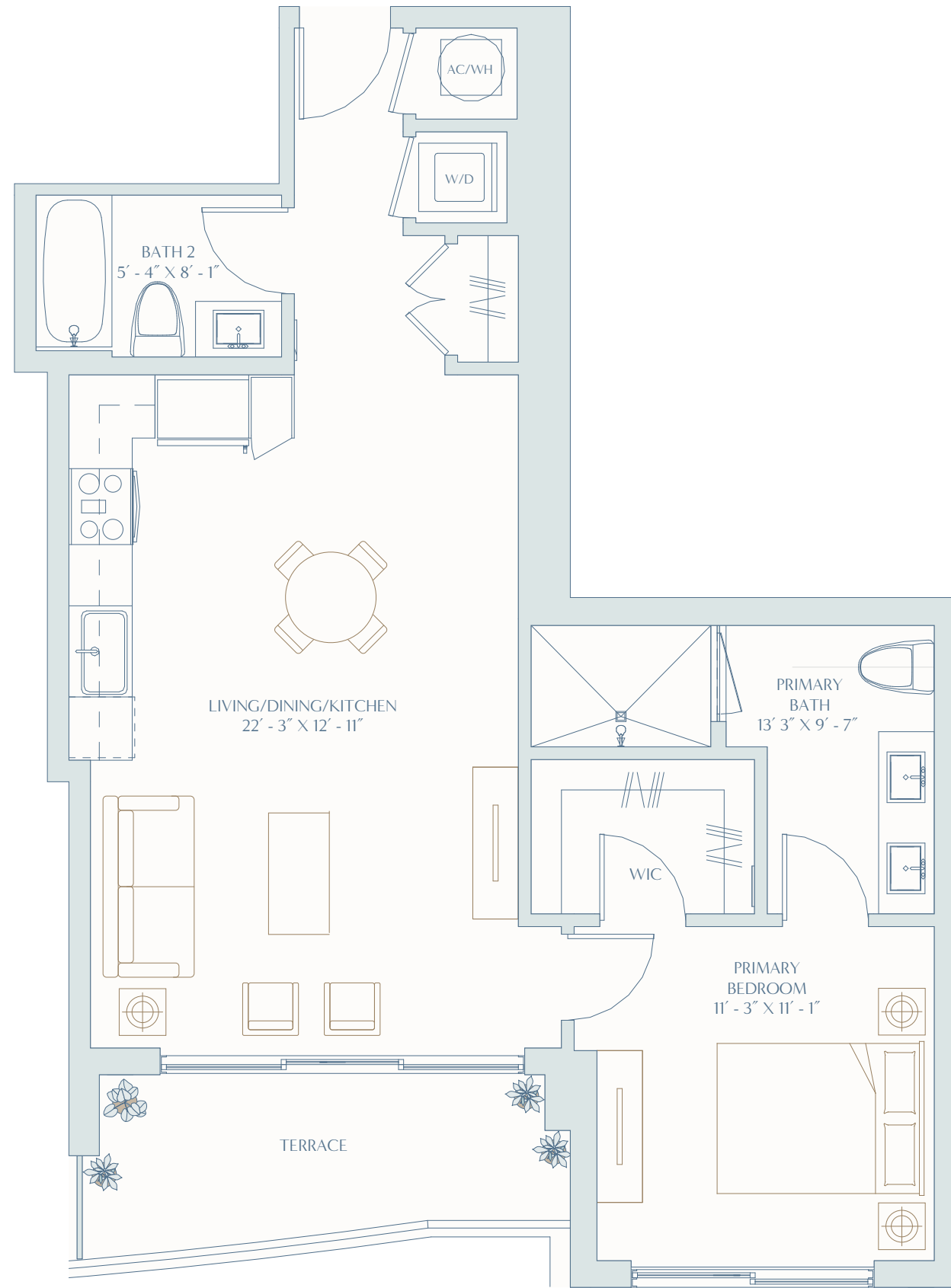
Stated square footages and dimensions are measured to the exterior boundaries of the exterior walls and the centerline of interior demising walls and in fact vary from the square footage and dimensions that would be determined by using the description and definition of the "Unit" set forth in the Declaration (which generally only includes the interior airspace between the perimeter walls and excludes all interior structural components and other common elements). This method is generally used in sales materials and is provided to allow a prospective buyer to compare the Units with units in other condominium projects that utilize the same method. Measurements of rooms set forth on this floor plan are generally taken at the farthest points of each given room (as if the room were a perfect rectangle), without regard for any cutouts or variations. Accordingly, the area of the actual room will typically be smaller than the product obtained by multiplying the stated length and width. All dimensions are estimates which will vary with actual construction, and all floor plans, specifications and other development plans are subject to change and will not necessarily accurately reflect the final plans and specifications for the development. All depictions of appliances, counters, soffits, floor coverings and other matters of detail, including, without limitation, items of finish and decoration, are conceptual only and are not necessarily included in each Unit. EQUAL HOUSING OPPORTUNITY.

RESIDENCE B2

1 BEDROOM
2 BATHROOMS

INTERIOR
798 SF | 74 M²

TERRACE
91 SF | 8 M²



ONEHOLLYWOODRESIDENCES.COM



Stated square footages and dimensions are measured to the exterior boundaries of the exterior walls and the centerline of interior demising walls and in fact vary from the square footage and dimensions that would be determined by using the description and definition of the "Unit" set forth in the Declaration (which generally only includes the interior airspace between the perimeter walls and excludes all interior structural components and other common elements). This method is generally used in sales materials and is provided to allow a prospective buyer to compare the Units with units in other condominium projects that utilize the same method. Measurements of rooms set forth on this floor plan are generally taken at the farthest points of each given room (as if the room were a perfect rectangle), without regard for any cutouts or variations. Accordingly, the area of the actual room will typically be smaller than the product obtained by multiplying the stated length and width. All dimensions are estimates which will vary with actual construction, and all floor plans, specifications and other development plans are subject to change and will not necessarily accurately reflect the final plans and specifications for the development. All depictions of appliances, counters, soffits, floor coverings and other matters of detail, including, without limitation, items of finish and decoration, are conceptual only and are not necessarily included in each Unit. EQUAL HOUSING OPPORTUNITY.

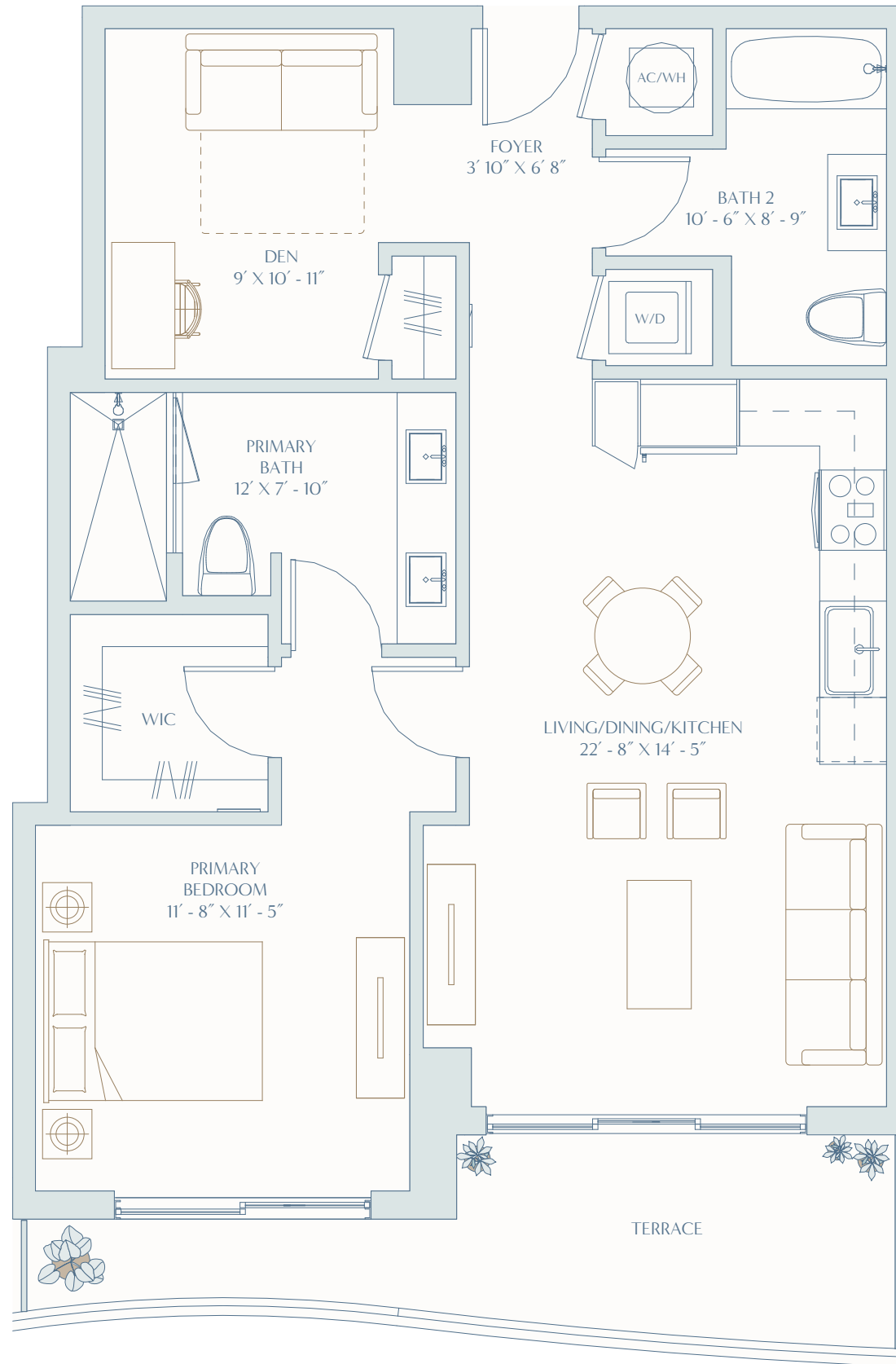
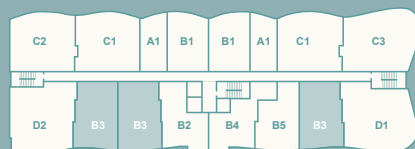


RESIDENCE B3

1 BEDROOM + DEN
2 BATHROOMS

INTERIOR
945 SF | 88 M²

TERRACE
135 SF | 13 M²

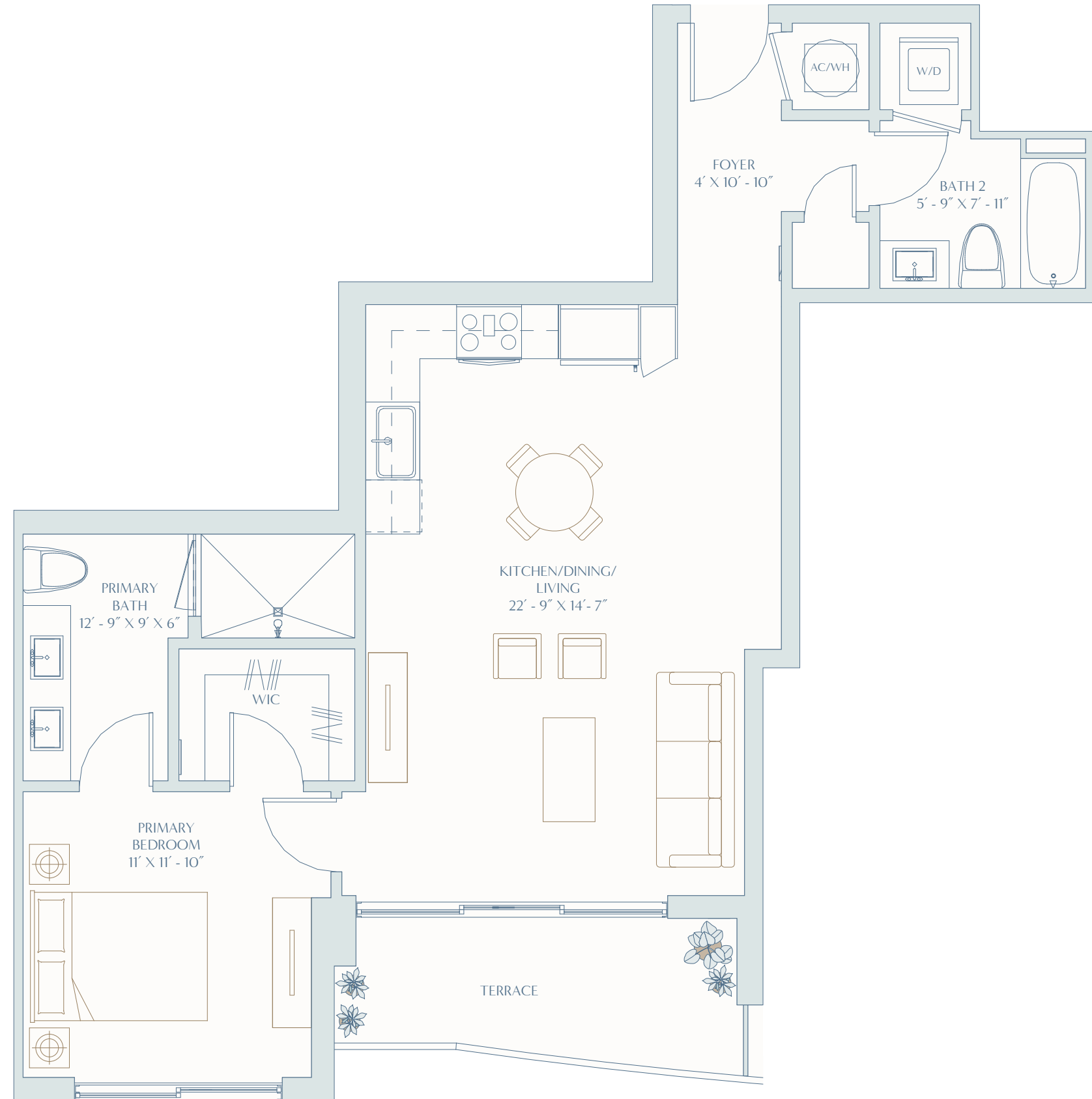


RESIDENCE B4

1 BEDROOM
2 BATHROOMS

INTERIOR
874 SF | 81 M²

TERRACE
90 SF | 8 M²

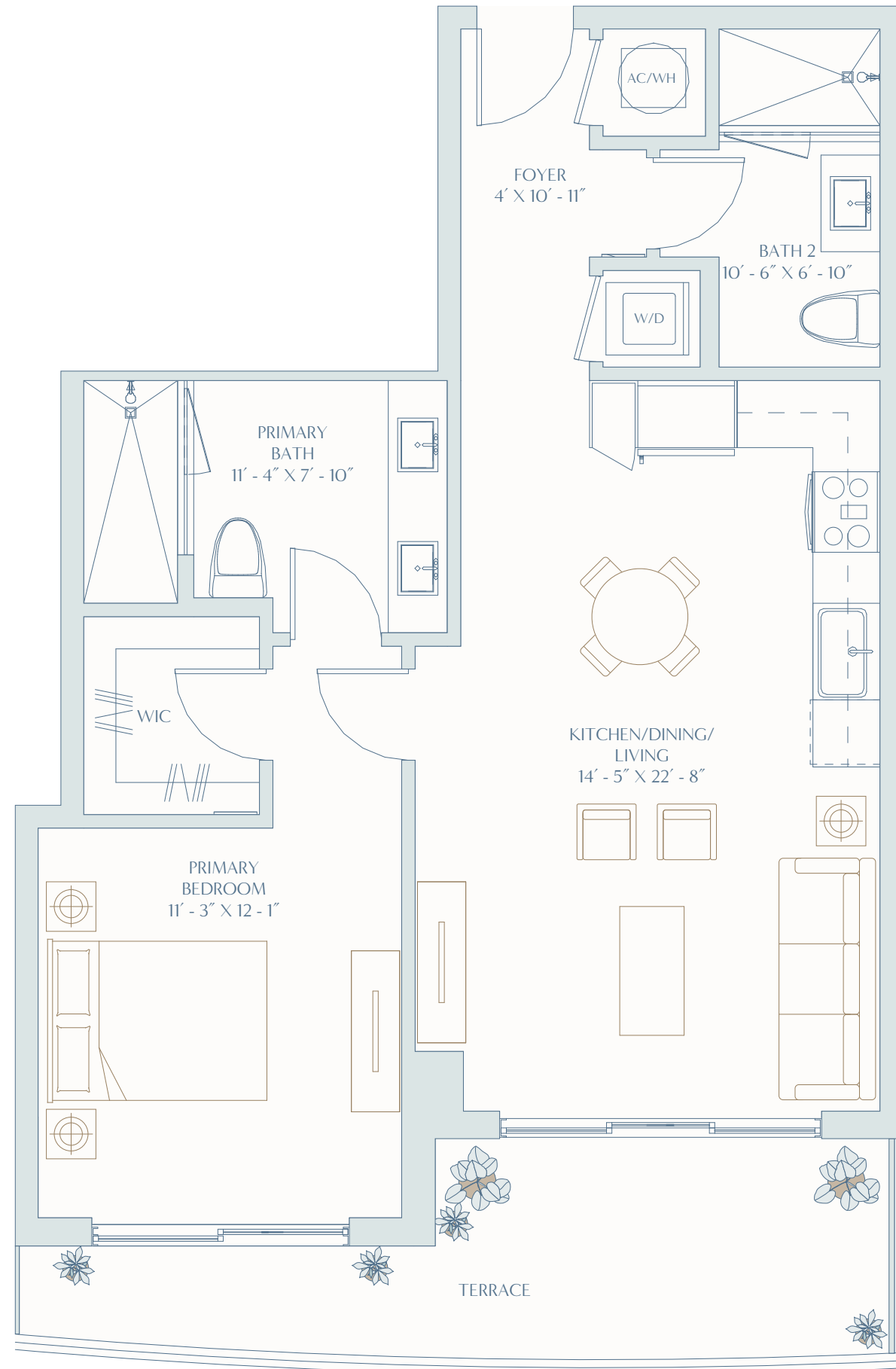
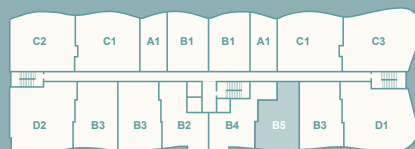


RESIDENCE B5

1 BEDROOM
2 BATHROOMS

INTERIOR
808 SF | 75 M²

TERRACE
152 SF | 14 M²



ONEHOLLYWOODRESIDENCES.COM

Developed By
STAR
DEVELOPERS GROUP

Exclusive Sales & Marketing By
FORTUNE
DEVELOPMENT
SALES

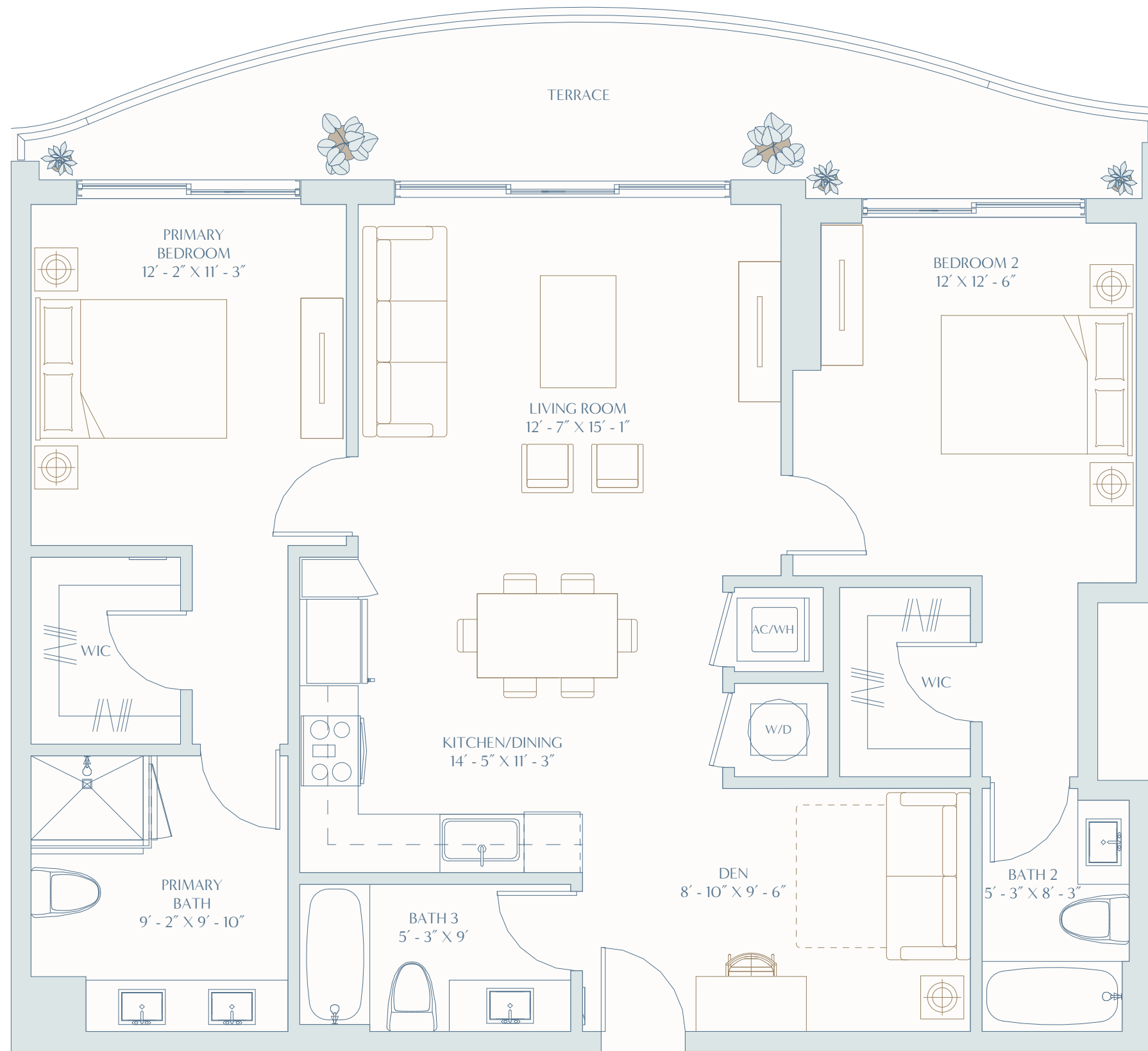
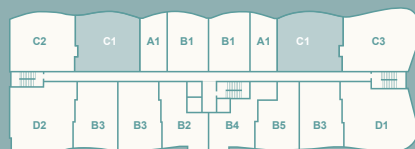
Stated square footages and dimensions are measured to the exterior boundaries of the exterior walls and the centerline of interior demising walls and in fact vary from the square footage and dimensions that would be determined by using the description and definition of the "Unit" set forth in the Declaration (which generally only includes the interior airspace between the perimeter walls and excludes all interior structural components and other common elements). This method is generally used in sales materials and is provided to allow a prospective buyer to compare the Units with units in other condominium projects that utilize the same method. Measurements of rooms set forth on this floor plan are generally taken at the farthest points of each given room (as if the room were a perfect rectangle), without regard for any cutouts or variations. Accordingly, the area of the actual room will typically be smaller than the product obtained by multiplying the stated length and width. All dimensions are estimates which will vary with actual construction, and all floor plans, specifications and other development plans are subject to change and will not necessarily accurately reflect the final plans and specifications for the development. All depictions of appliances, counters, soffits, floor coverings and other matters of detail, including, without limitation, items of finish and decoration, are conceptual only and are not necessarily included in each Unit. EQUAL HOUSING OPPORTUNITY.

RESIDENCE
C1

2 BEDROOMS + DEN
3 BATHROOMS

INTERIOR
1,212 SF | 113 M²

TERRACE
195 SF | 18 M²

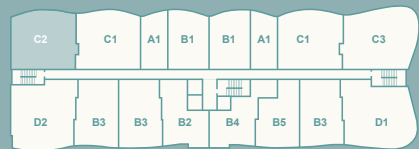
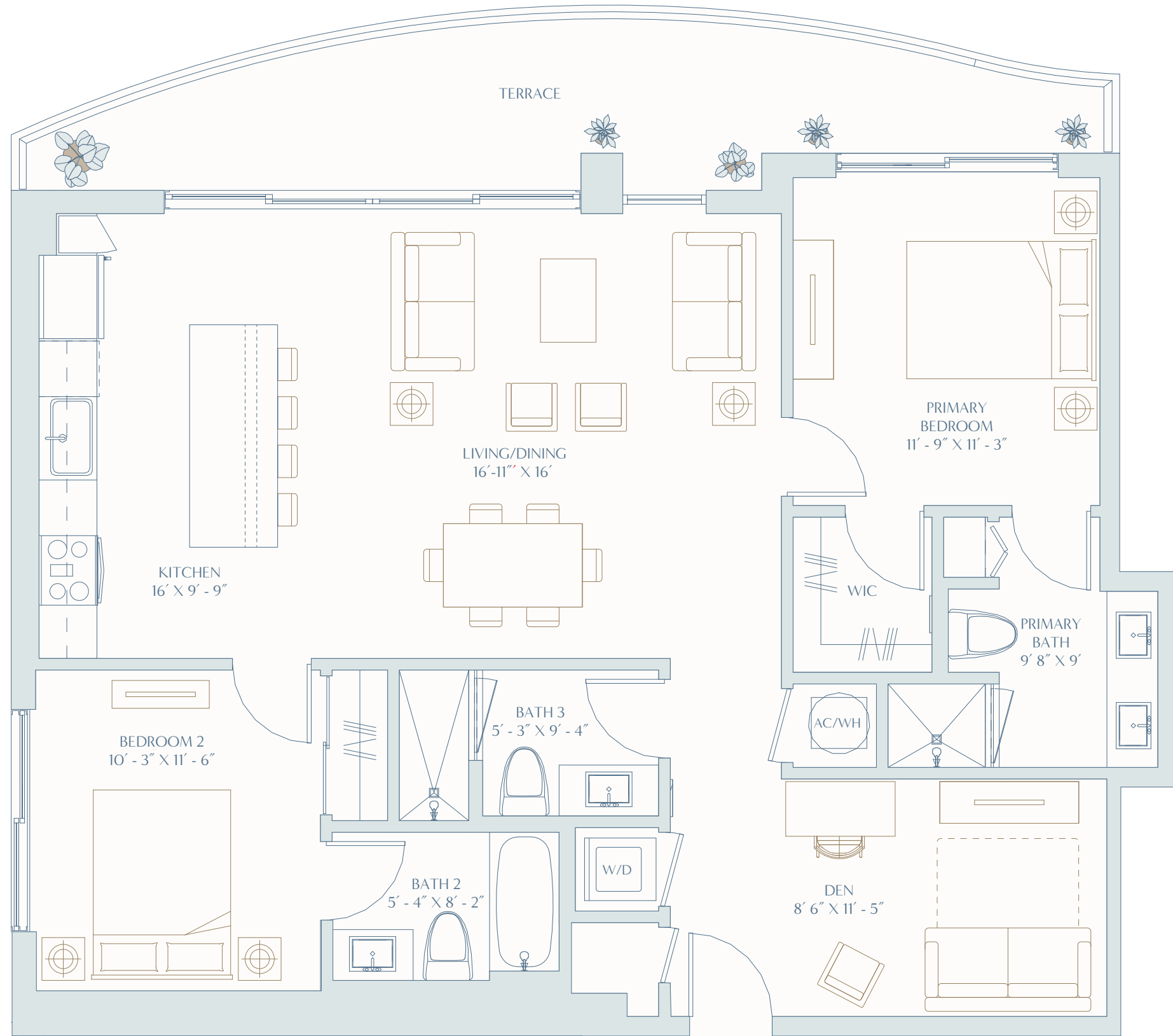


RESIDENCE
C2

2 BEDROOMS + DEN
3 BATHROOMS

INTERIOR
1,220 SF | 113 M²

TERRACE
196 SF | 18 M²

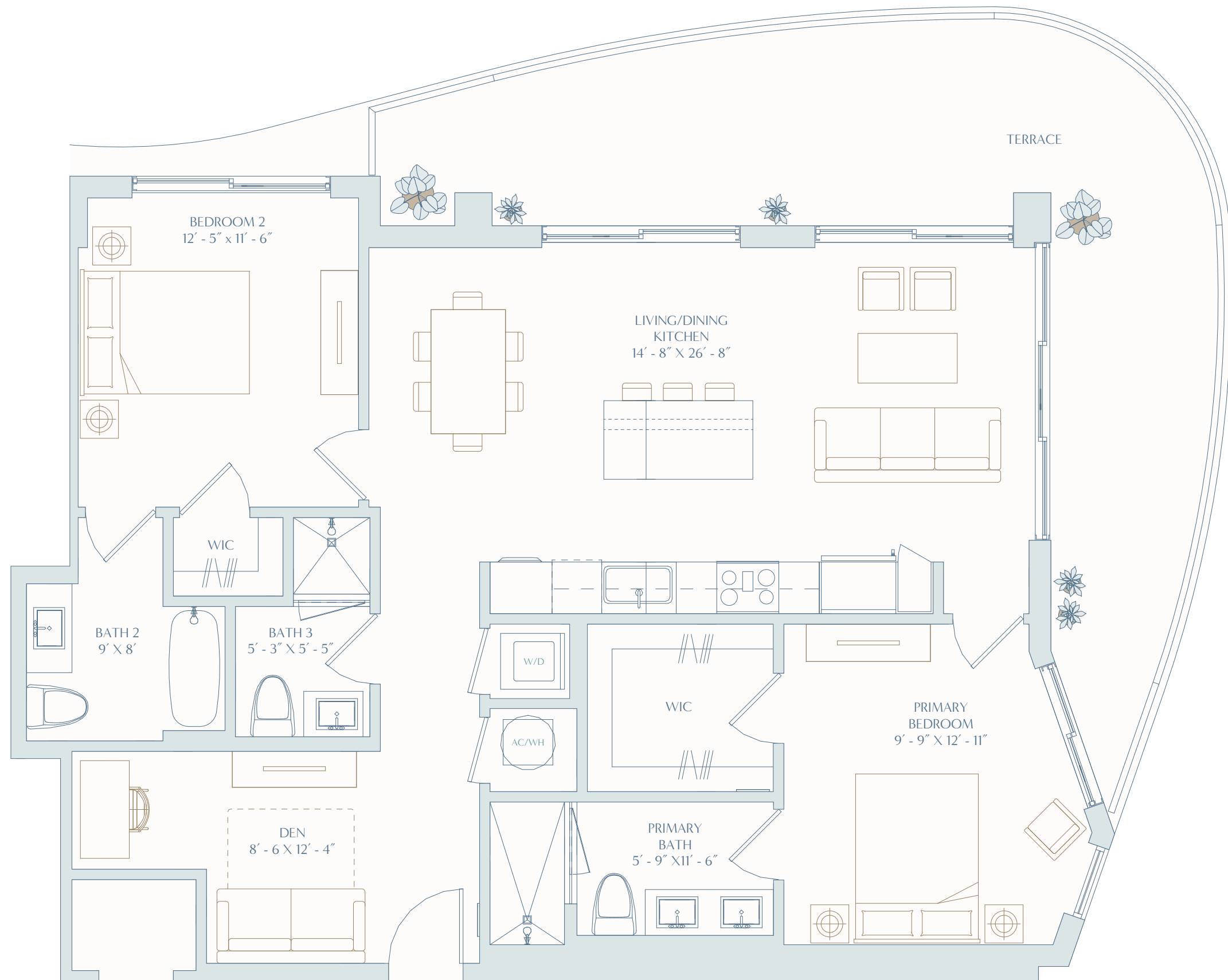


RESIDENCE C3

2 BEDROOMS + DEN
3 BATHROOMS

INTERIOR
1,235 SF | 114 M²

TERRACE
406 SF | 37 M²

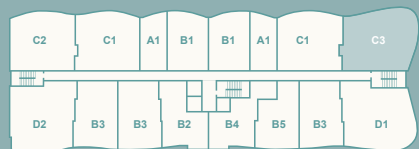


ONEHOLLYWOODRESIDENCES.COM



Exclusive Sales & Marketing By
FORTUNE
DEVELOPMENT
SALES

Stated square footages and dimensions are measured to the exterior boundaries of the exterior walls and the centerline of interior demising walls and in fact vary from the square footage and dimensions that would be determined by using the description and definition of the "Unit" set forth in the Declaration (which generally only includes the interior airspace between the perimeter walls and excludes all interior structural components and other common elements). This method is generally used in sales materials and is provided to allow a prospective buyer to compare the Units with units in other condominium projects that utilize the same method. Measurements of rooms set forth on this floor plan are generally taken at the farthest points of each given room (as if the room were a perfect rectangle), without regard for any cutouts or variations. Accordingly, the area of the actual room will typically be smaller than the product obtained by multiplying the stated length and width. All dimensions are estimates which will vary with actual construction, and all floor plans, specifications and other development plans are subject to change and will not necessarily accurately reflect the final plans and specifications for the development. All depictions of appliances, counters, soffits, floor coverings and other matters of detail, including, without limitation, items of finish and decoration, are conceptual only and are not necessarily included in each Unit. EQUAL HOUSING OPPORTUNITY.

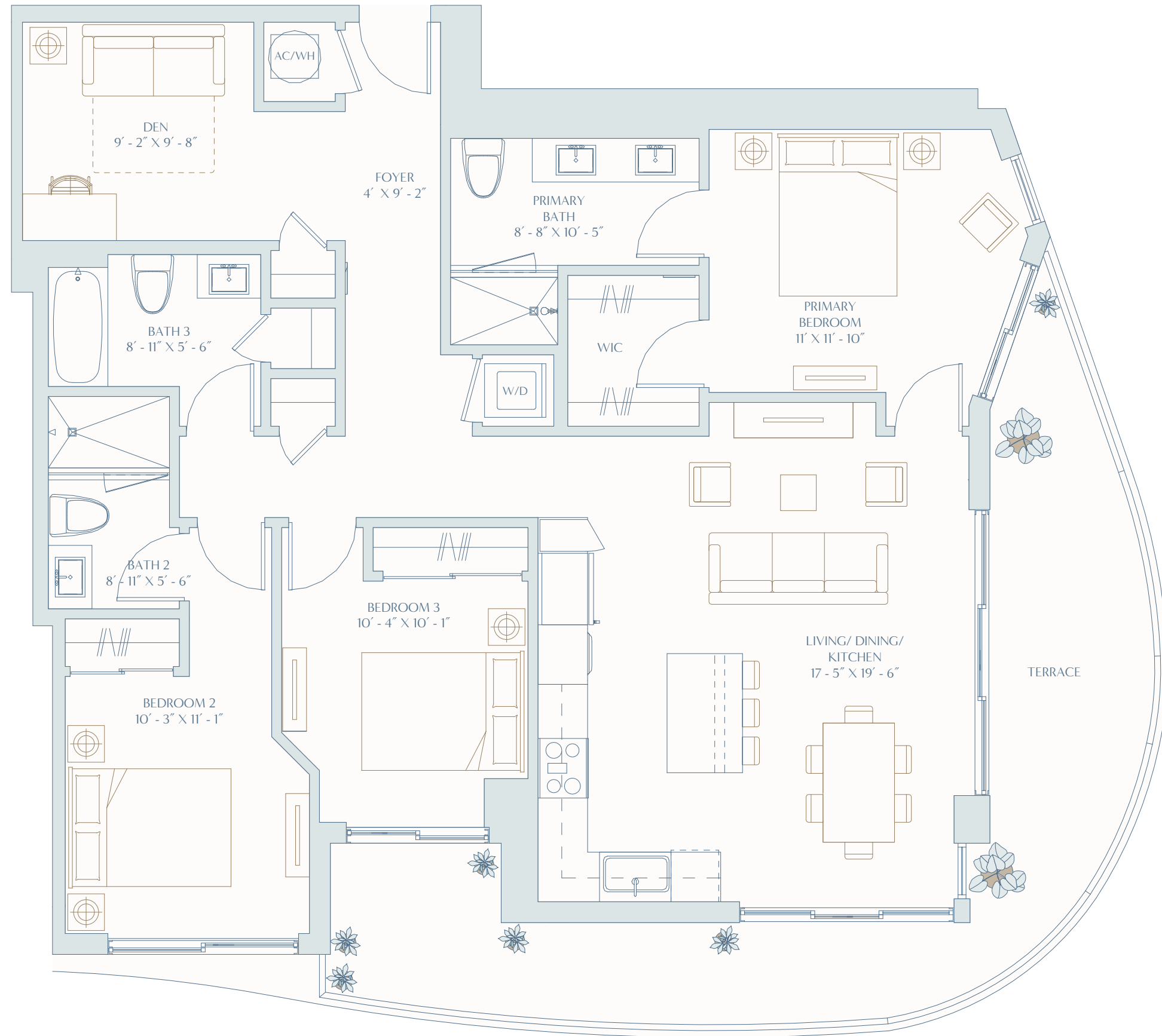


RESIDENCE D1

3 BEDROOMS + DEN
3 BATHROOMS

INTERIOR
1,425 SF | 132 M²

TERRACE
320 SF | 30 M²

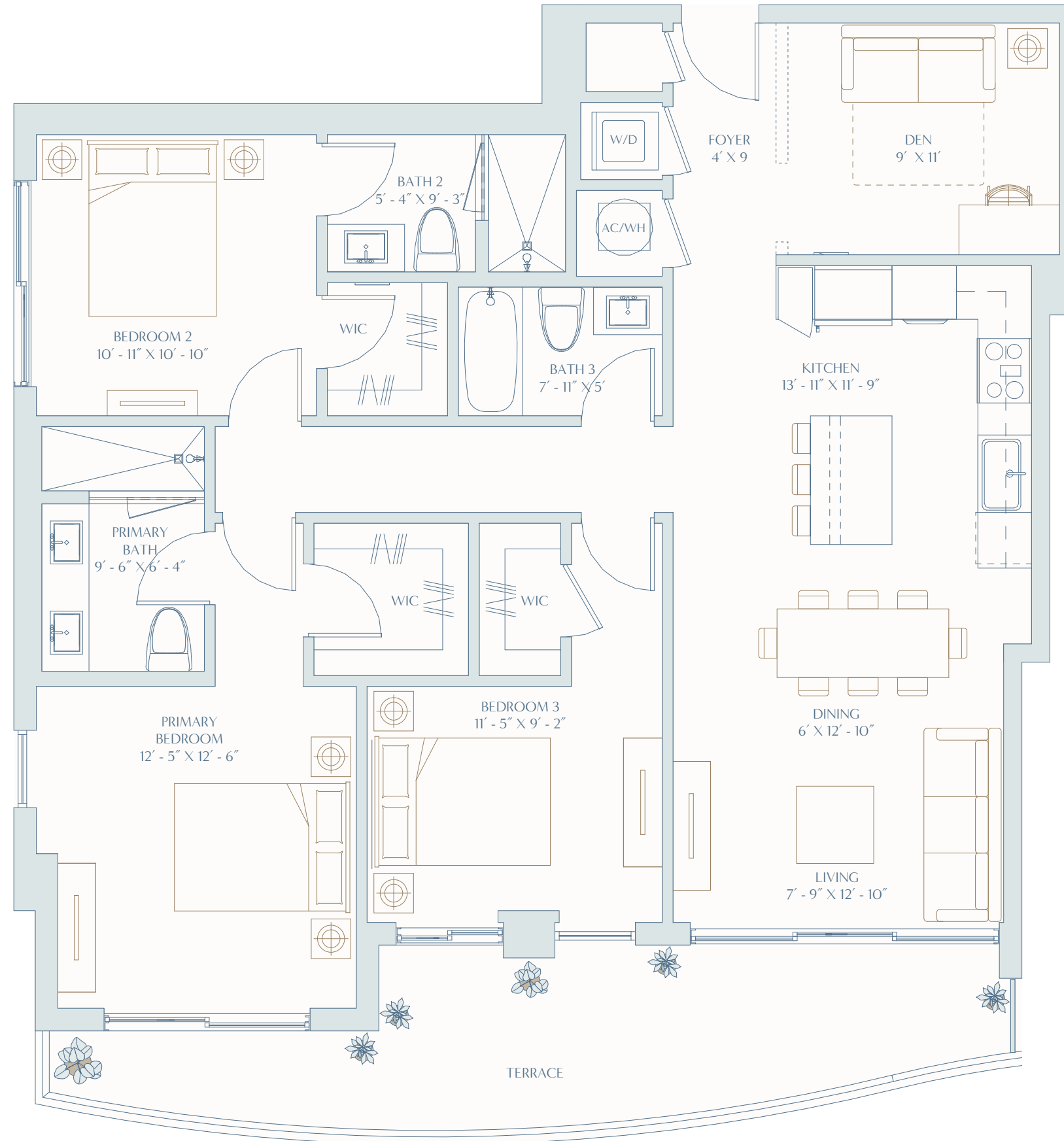


RESIDENCE D2

3 BEDROOMS + DEN
3 BATHROOMS

INTERIOR
1,400 SF | 130 M²

TERRACE
207 SF | 19 M²



ONEHOLLYWOODRESIDENCES.COM



Exclusive Sales & Marketing By
FORTUNE
DEVELOPMENT
SALES

Stated square footages and dimensions are measured to the exterior boundaries of the exterior walls and the centerline of interior demising walls and in fact vary from the square footage and dimensions that would be determined by using the description and definition of the "Unit" set forth in the Declaration (which generally only includes the interior airspace between the perimeter walls and excludes all interior structural components and other common elements). This method is generally used in sales materials and is provided to allow a prospective buyer to compare the Units with units in other condominium projects that utilize the same method. Measurements of rooms set forth on this floor plan are generally taken at the farthest points of each given room (as if the room were a perfect rectangle), without regard for any cutouts or variations. Accordingly, the area of the actual room will typically be smaller than the product obtained by multiplying the stated length and width. All dimensions are estimates which will vary with actual construction, and all floor plans, specifications and other development plans are subject to change and will not necessarily accurately reflect the final plans and specifications for the development. All depictions of appliances, counters, soffits, floor coverings and other matters of detail, including, without limitation, items of finish and decoration, are conceptual only and are not necessarily included in each Unit. EQUAL HOUSING OPPORTUNITY.